

KNOWLEDGE SERVICES

NEWSLETTER

Issue 5

Welcome to the January 2024
Knowledge Services Newsletter

Welcome to our first newsletter of 2024! Here you can find out about the services we offer and news about our resources.

Our services are listed on this page, and we can be contacted by telephone on 01384 816173 or email at:

knowledgeservices@dudley.gov.uk

So, what's in this edition of the Newsletter?

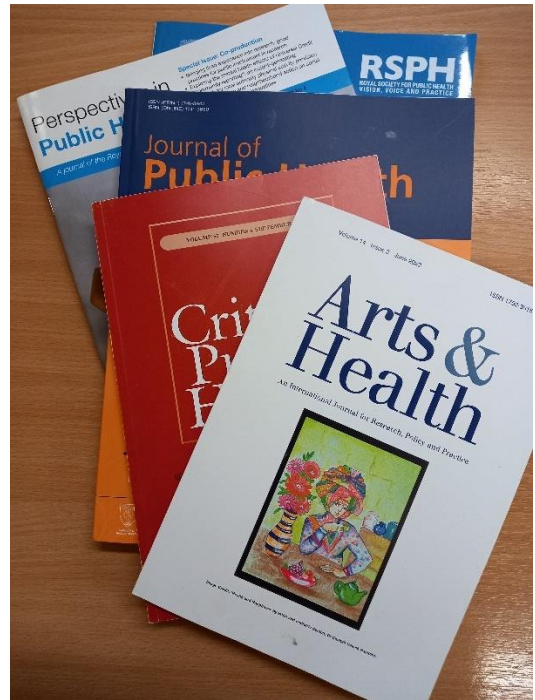
You, a brew and someone new', information about our randomised coffee trial. A chance to meet and talk to other people within the organisation

Staff Publications Repository – what is it and how do I access it?

Focus on poverty – useful reading from the Joseph Rowntree Foundation

Recent reports on health inequality

Evidence searching



Our services include:

- Evidence searching
- Article requests
- Training: group sessions or 1:1
- Health News Digest & Covid bulletins
- Journal clubs
- Print & e books
- Journals
- Tables of contents

You, a brew and someone new!



Would you like to meet more people at work? Would it be interesting to chat with colleagues from a different part of the council? If so, why not sign up to 'You, a brew and someone new'?

Every year the Knowledge Services Team runs an event that pairs up colleagues to have a face-to-face or online chat, while relaxing and having a cup of tea.

In 2024 it is timed to coincide with the national Time To Talk Day on 1 February, but you can arrange to meet at any time during February.

The event is a way of getting away from busy workloads for a short time, to connect with colleagues we wouldn't normally get the chance to meet, while learning about each other and encouraging collaboration. All staff are welcome to take part.

To sign up email knowledgeservices@dudley.gov.uk by Friday 26 January with a few sentences to introduce yourself, such as your name, job role, how long you have worked in the council and any hobbies or interests.

Staff in Knowledge Services will then pair you with another colleague working within the council. You will receive an email to let you know who you have been paired with. Then just arrange a mutually convenient time to meet in for a 10-15 minute chat.

Grab a drink and get chatting.

Feedback from previous participants

"Brilliant. It was a great hour out to chat with someone who I actually already knew and we got to know each other much better and felt very relaxed and 'heard'"

"It was a very easy meeting both online initially and then in person getting to meet a colleague across the Council who I wouldn't normally have met, as our work does not normally have any connections. We have arranged to meet up again and have already exchanged information that may assist from a work perspective in the future. The benefit is we got along very well and hope to meet up again, so it is a worthwhile trial from my perspective"

"It was great to meet my random person - it felt a bit like a blind date! It was good to find out what they do for their job - I had heard of their role before though I wasn't sure of what it entailed, so to learn the detail was good. I believe that she is someone who I will be able to contact in the future for work purposes"

Staff Publications Repository

The Staff Publications Repository is a central place to access the externally published work produced by staff within the public health team. The repository highlights the work produced by members of staff and promotes the sharing of knowledge and resources to improve practice.

Publications include work where a member of the public health team, past or present, is either a named author or has made a contribution to an external publication as a named contributor.

Please note – this repository does not include publications produced internally for Dudley Council.

How can I submit my work to be included in the repository?

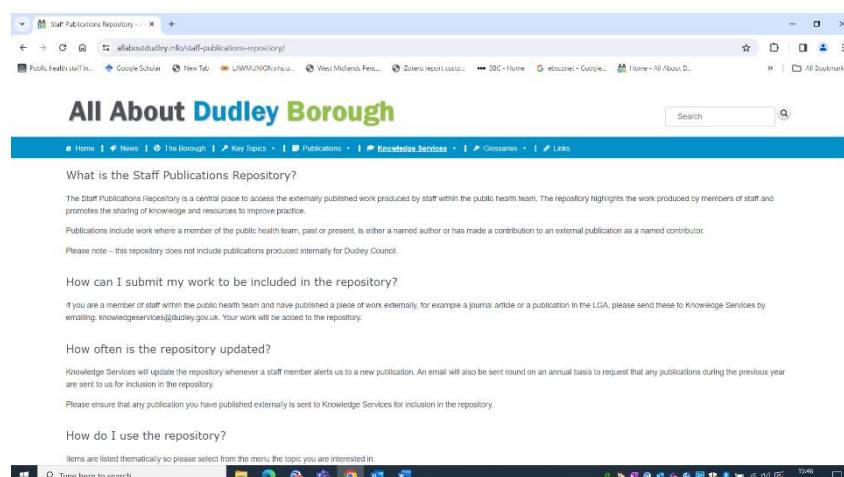
If you are a member of staff within the public health team and have published a piece of work externally, for example a journal article or a publication in the LGA, please send these to Knowledge Services by emailing: knowledgeservices@dudley.gov.uk. Your work will be added to the repository.

How often is the repository updated?

Knowledge Services will update the repository whenever a staff member alerts us to a new publication. An email will also be sent round on an annual basis to request that any publications during the previous year are sent to us for inclusion in the repository.

Please ensure that any publication you have published externally is sent to Knowledge Services for inclusion in the repository.

The Repository can found here: <https://www.allaboutdudley.info/staff-publications-repository/>



Focus on Poverty

With next month's Directorate Away Day hosting a session focussing on tackling poverty. Here is some background reading courtesy of the Joseph Rowntree Foundation.

Destitution in the UK 2023 This study, the fourth in the Destitution in the UK series, reveals approximately 3.8 million people experienced destitution in 2022, including around one million children. This is almost two-and-a-half times the number of people in 2017, and nearly triple the number of children. There is an urgent need for action to tackle destitution in the UK.

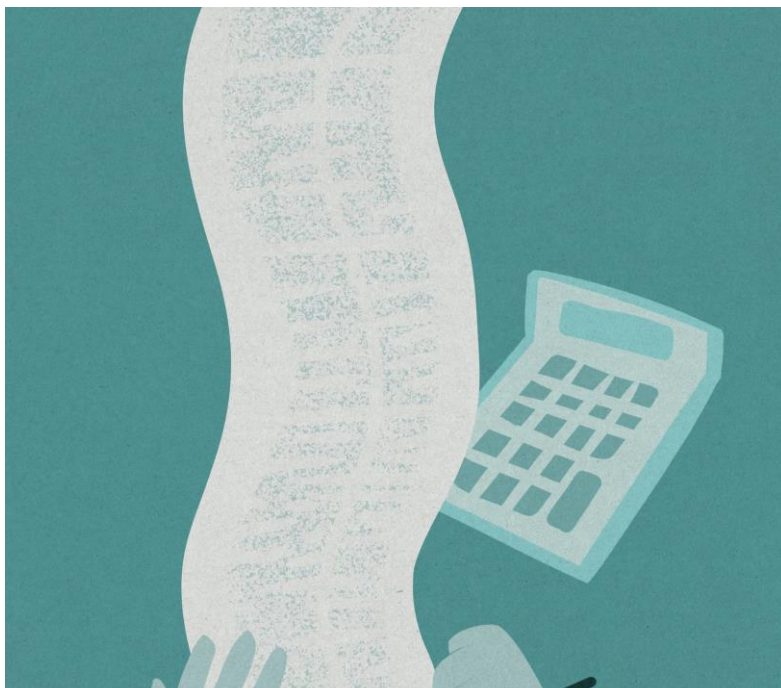
<https://www.jrf.org.uk/deep-poverty-and-destitution/destitution-in-the-uk-2023>

Designing out hardship and destitution Not enough food. Can't heat your home. No bed. Can't pay the rent. Can't afford bus fare into town. Can't afford a friend over for tea. Living in fear of your washing machine or fridge breaking down. Can't sleep because your mind is on fire with stress and worry. These experiences have become all too common in our country.

<https://www.jrf.org.uk/deep-poverty-and-destitution/designing-out-hardship-and-destitution>

What protects people from very deep poverty, and what makes it more likely?

These briefings look at the effect of work, housing, and the importance of social and financial safety nets, on the dynamics of very deep poverty. What must be done to make sure we can all afford life's essentials when our circumstances change? <https://www.jrf.org.uk/deep-poverty-and-destitution/what-protects-people-from-very-deep-poverty-and-what-makes-it-more>



Recent reports on Health Inequality

Institute of Health, Equity Health inequalities, lives cut short

January 2024

This a report from The Institute of Health Equity and written by Prof. Peter Goldblatt. It examines death rates from the decade beginning 2011 and the part that inequality played in excess deaths.

<https://www.instituteoftheequity.org/resources-reports/health-inequalities-lives-cut-short/read-the-report.pdf>

Health Foundation, Targeting health inequalities - realising the potential of targets in addressing health inequalities

Commissioned by the Health Foundation and produced by The University of Strathclyde in partnership with Health Equity North.

<https://www.health.org.uk/publications/reports/targeting-health-inequalities-realising-the-potential-of-targets-in-addressing-health-inequalities>



Looking for Evidence?



Looking for evidence to help inform a decision, or want to find best practice before implementing a new service? An evidence search is a thorough and organised way to find information on your topic. It can save you time and add valuable insight in the early stages of a project.

Knowledge Services can carry out an evidence search for you. To request a search please use our Search Request Form which can be found here:

<https://www.allaboutdudley.info/home/knowledge-services/literature-search/>

We have access to the NICE/NHS core databases, but can also carry out grey literature searches for reports, unpublished articles and ephemeral material.

Some examples of recent searches we have been asked to carry out are: **Digital technology and digital communication tools that aims to support people manage long term health conditions and encourages positive behaviour change; Health hubs in public libraries; Fuel poverty mortality from last year and predictions for this year; Circulatory Disease - reviews, guidance and public health developments; Linkages between child and adult obesity; Frail older adults; Work stress interventions for organisations.**

Just a reminder...

Just a reminder that if you need our services, our contact details and forms for requesting articles and evidence searches can be found on All About Dudley.

<https://www.allaboutdudley.info/home/knowledge-services/about-us/>

You can also follow us on Twitter @ <https://twitter.com/knowledgeservi1>