



# Understanding Dudley 2017

A demographic, health and socio-economic profile of our communities

## Chapter 4 – Staying Safe

Chapter 1 – Executive summary  
Chapter 2 – Population and Household Characteristics  
Chapter 3 – Being Healthy  
**Chapter 4 – Staying Safe**  
Chapter 5 – Enjoying and Achieving  
Chapter 6 – Economic Wellbeing

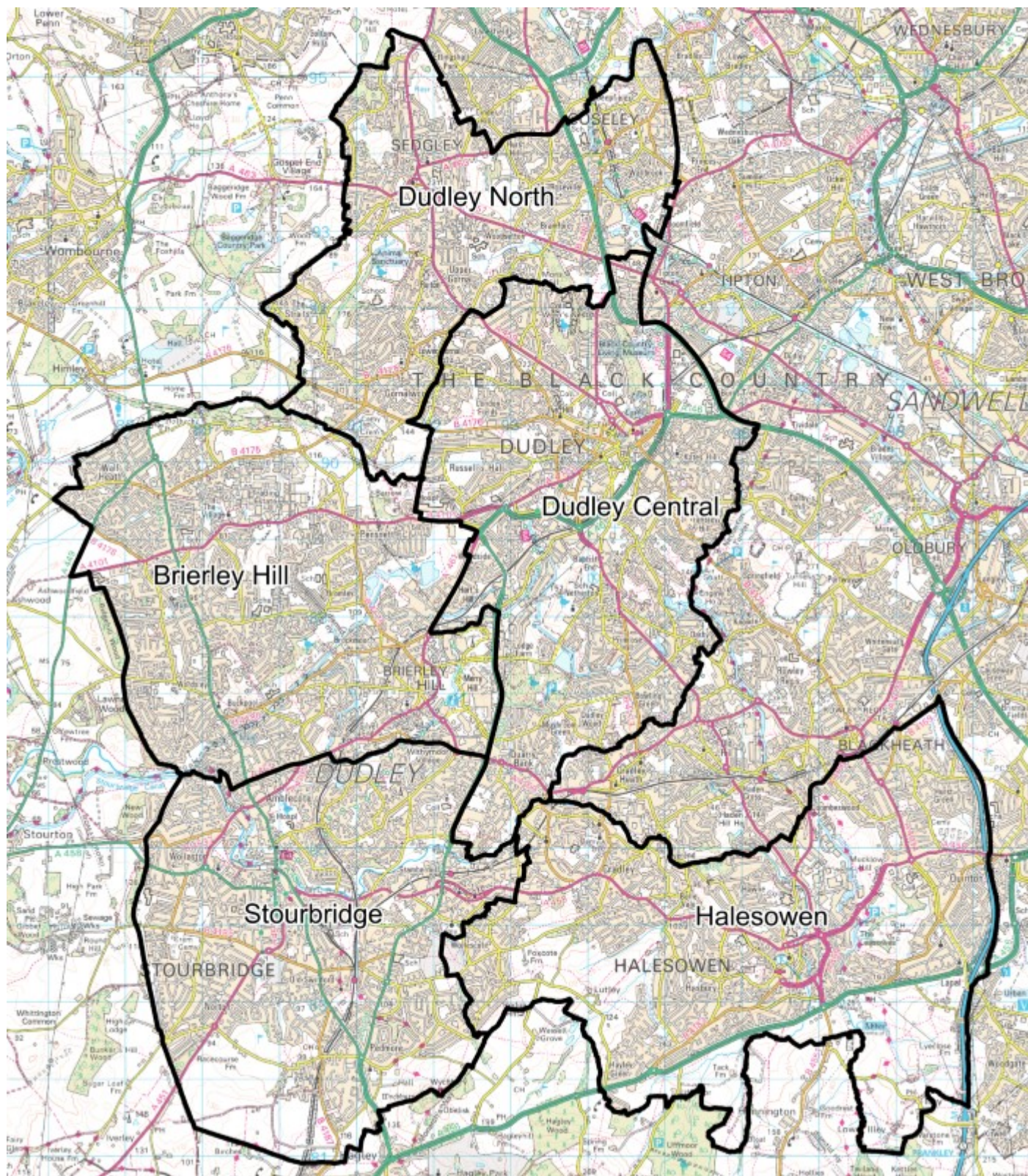
## Document Governance

Title	Understanding Dudley 2017 A demographic, health and socio-economic profile of our communities Chapter 4—Staying Safe.
Purpose/scope	To provide a profile of the communities living in Dudley by locality.
Subject Key Words	Population, demography, health, children and young people, adults, economy.
Authors	Clare Davies (clare.davies@dudley.gov.uk) Paul Quigley (paul.quigley@dudley.gov.uk) Leigh Steel (leigh.steel@dudley.gov.uk) Diane Dickinson (diane.dickinson@dudley.gov.uk) Greg Barbosa (greg.barbosa@dudley.gov.uk)
Date of Report	October 2017
Disclaimer	Dudley Council, while believing the information in this publication to be correct, does not guarantee its accuracy nor does the Council accept any liability for any direct or indirect loss or damage or other consequences, however aspiring, from the use of such information supplied. For our full Terms and Disclaimer, please see <a href="http://www.dudley.gov.uk/privacy-disclaimer-statement/">http://www.dudley.gov.uk/privacy-disclaimer-statement/</a>
Period Applicable	2016/17
Distribution	Public
Acknowledgment	This publication is influenced by Understanding Telford and Wrekin 2017, produced by Telford and Wrekin Council. We would like to give special thanks to each of the authors for giving us a base to report on Understanding Dudley.

This report contains data adapted from the Office for National Statistics, licensed under the Open Government Licence v3.0.



## Map of Dudley Localities



© Crown Copyright and database right 2018. Ordnance Survey 100019566.



## **Acronyms**

SAR– Standardised Admissions Ratio, this is the number of observed admissions in the sample group to the expected admissions. MSA for example =  $\text{MSA Observed} / \text{Adjusted MSA Expected admissions} * 100$ .

HHs– Households

ASB - Anti-Social Behaviour

## Contents

4.1 Emergency Admissions under 5.....	6
4.2 A&E attendances—under 5.....	7
4.3 Hospital admissions—under 5.....	8
4.4 Hospital admissions—under 15.....	9
4.5 Hospital admissions—aged 15-24.....	10
4.6 Hospital stays—self harm.....	11
4.7 Hospital stays—alcohol harm.....	12
4.8 Risk factors identified at initial assessment—Children Safeguarding.....	13
4.9 Child protection plans.....	14
4.10 Children looked after.....	15
4.11 Homelessness.....	16
4.12 Households in temporary accommodation.....	17
4.13 Crime and ASB: Overall Crime.....	18
4.14 Crime and ASB: Bicycle theft.....	19
4.15 Crime and ASB: Burglary.....	20
4.16 Crime and ASB: Criminal damage and arson.....	21
4.17 Crime and ASB: Drugs.....	22
4.18 Crime and ASB: Other Crime.....	23
4.19 Crime and ASB: Other theft.....	24
4.20 Crime and ASB: Possession of weapons.....	25
4.21 Crime and ASB: Public order.....	26
4.22 Crime and ASB: Robbery.....	27
4.23 Crime and ASB: Shoplifting.....	28
4.24 Crime and ASB: Theft from the person.....	29
4.25 Crime and ASB: Vehicle crime.....	30
4.26 Crime and ASB: Violence and sexual offences.....	31
4.27 Crime and ASB: Anti-social behaviour.....	32
4.28 Crime and ASB Overall.....	33
4.29 Youth Offending.....	34

## 4.1 Emergency Admissions—under 5

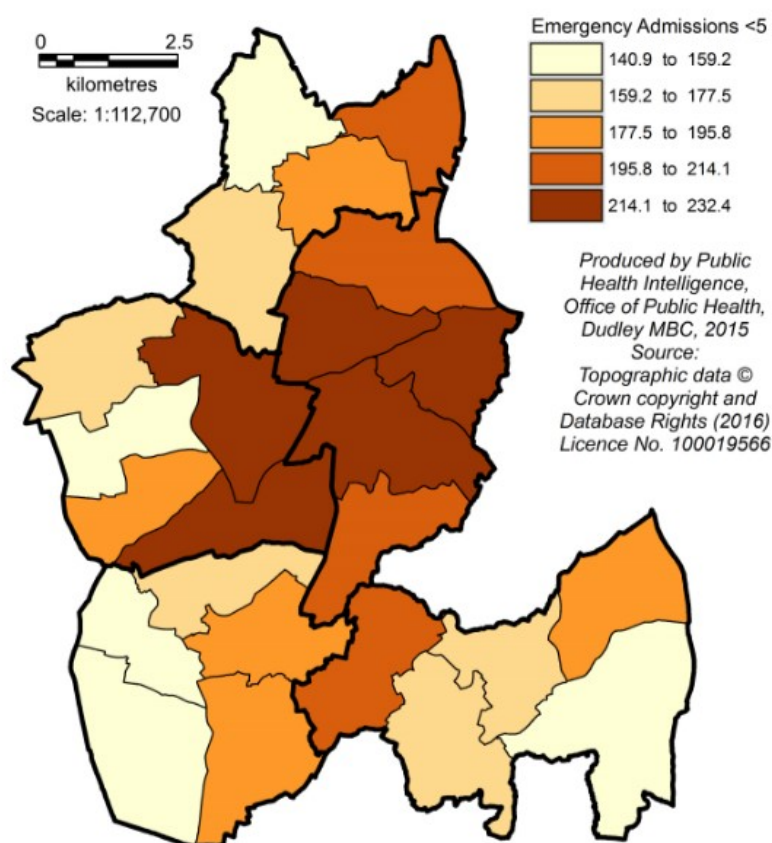
**Table 1: Emergency Hospital Admissions for Children Aged under 5, 2012/13-2014/15 (Rate per 1,000 Population)**

	Rate	Eng comp
Brierley Hill	199.7	●
Dudley Central	218.3	●
Dudley North	179.6	●
Halesowen	181.8	●
Stourbridge	171.2	●
<b>Dudley</b>	<b>193.3</b>	●
England	147.3	

● Significantly better than the national rate   ● Similar to the national rate   ● Significantly worse than the national rate

Source: Office for National Statistics, Health and Social Care Information Centre, Hospital Episode Statistics, taken from Local Health Profiles ([www.localhealth.org.uk](http://www.localhealth.org.uk))

**Figure 1: Rate of Emergency Hospital Admissions in under 5s (Rate per 1,000 Population)**



Source: Office for National Statistics, Health and Social Care Information Centre, Hospital Episode Statistics, taken from Local Health Profiles ([www.localhealth.org.uk](http://www.localhealth.org.uk))

### What is this data telling us?

The rate per 1,000 population for children aged under 5 in Dudley is higher than the national at 193.3 compared to 147.3 respectively. The highest rate is found in Dudley Central at 218.3. The rates across the wards range between 140.9 in Sedgley up to 232.4 in Netherton, Woodside and St Andrews.

## 4.2 A&E Attendances—under 5

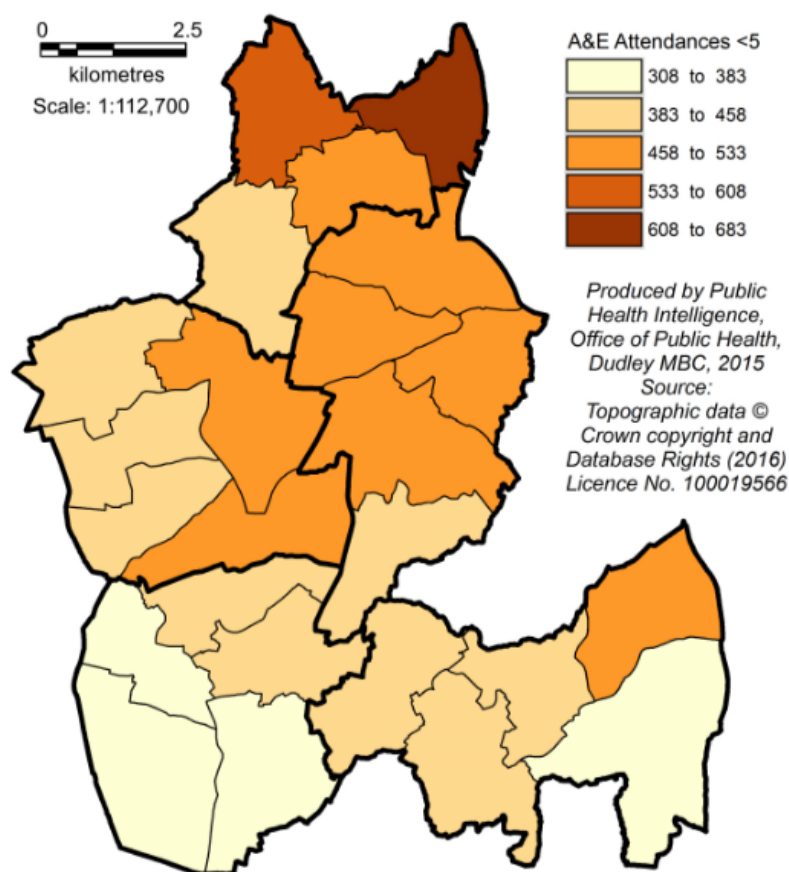
**Table 2: A&E Attendance Rate per 1,000 Population aged 0-4, 2012/13-2014/15**

	Rate	Eng comp
Brierley Hill	442.8	●
Dudley Central	482.7	●
Dudley North	536.8	●
Halesowen	416.8	●
Stourbridge	364.5	●
<b>Dudley</b>	<b>449.1</b>	●
England	533.6	

● Significantly better than the national rate ● Similar to the national rate ● Significantly worse than the national rate

Source: Office for National Statistics, Health and Social Care Information Centre, Hospital Episode Statistics, taken from Local Health Profiles ([www.localhealth.org.uk](http://www.localhealth.org.uk))

**Figure 2: A&E Attendance Rate per 1,000 Population Aged 0-4, 2012/13-2014/15**



### What is this data telling us?

The rate of A&E attendances for 0-4 year olds in Dudley was 449.1 which is lower than the England rate of 533.6. All the localities were lower than the England baseline except for Dudley North which was similar with a rate of 536.8. The wards varied from 308.2 in Norton up to 682.8 in Coseley East.

## 4.3 Hospital Admissions—under 5

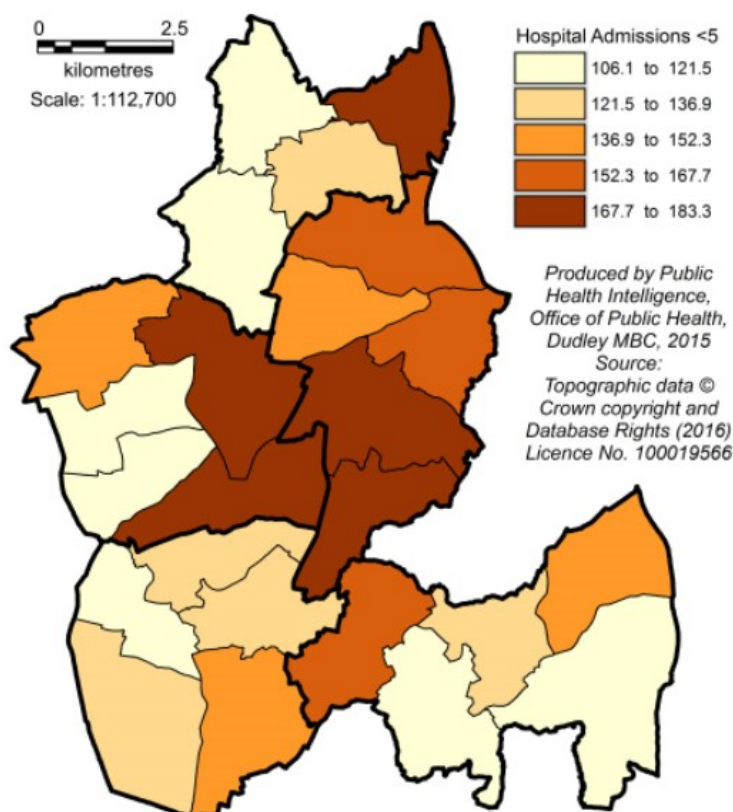
**Table 3: Hospital Admissions Due to Unintentional and Deliberate Injuries to Children Aged 0-4, 2010/11-2014/15, Rate per 10,000**

	Rate	Eng comp
Brierley Hill	157.8	●
Dudley Central	167.0	●
Dudley North	134.2	●
Halesowen	133.0	●
Stourbridge	127.1	●
<b>Dudley</b>	<b>146.4</b>	●
England	140.8	

● Significantly better than the national rate ● Similar to the national rate ● Significantly worse than the national rate

Source: Office for National Statistics, Health and Social Care Information Centre, Hospital Episode Statistics, taken from Local Health Profiles ([www.localhealth.org.uk](http://www.localhealth.org.uk))

**Figure 3: Hospital Admissions Due to Unintentional and Deliberate Injuries to Children aged 0-4, Rate per 10,000**



Source: Office for National Statistics, Health and Social Care Information Centre, Hospital Episode Statistics, taken from Local Health Profiles ([www.localhealth.org.uk](http://www.localhealth.org.uk))

### What is this data telling us?

The rate of hospital admissions due to unintentional and deliberate injuries to children aged 0-4 in Dudley is 146.4 per 10,000 population, this is similar to the England rate of 140.8. Brierley Hill and Dudley Central have worse rates than the baseline whereas the other three are better.

The wards vary from as low as 106.1 in Halesowen South up to 183.3 in Brierley Hill.



## 4.4 Hospital Admissions—under 15

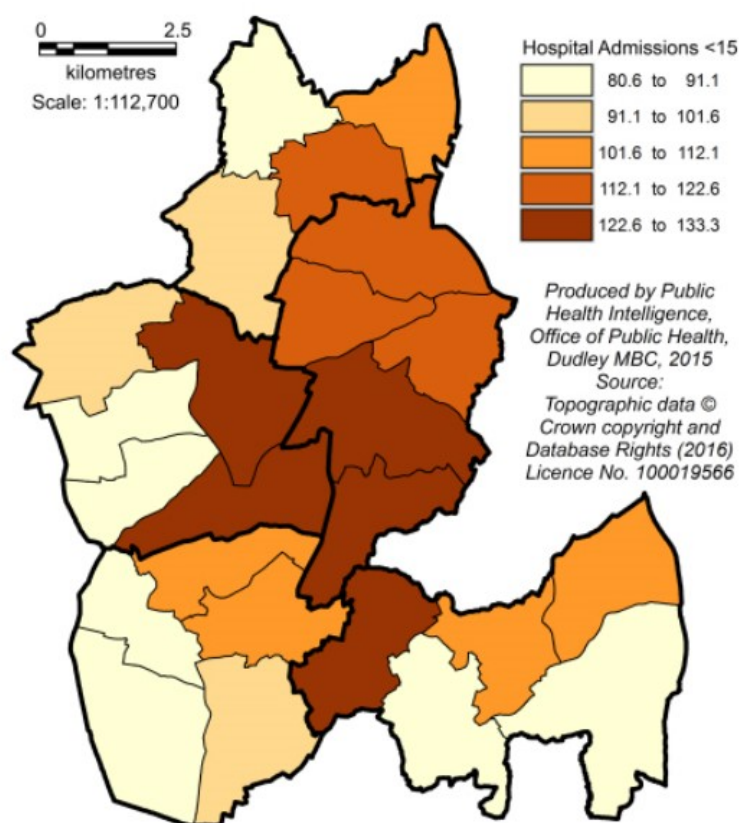
**Table 4: Hospital Admissions Due to Unintentional and Deliberate Injuries to Children Aged 0-14, 2010/11-2014/15, Rate per 10,000**

	Rate	Eng comp
Brierley Hill	111.2	●
Dudley Central	122.8	●
Dudley North	101.1	●
Halesowen	103.2	●
Stourbridge	96.1	●
<b>Dudley</b>	<b>108.4</b>	●
England	111.7	

● Significantly better than the national rate ● Similar to the national rate ● Significantly worse than the national rate

Source: Office for National Statistics, Health and Social Care Information Centre, Hospital Episode Statistics, taken from Local Health Profiles ([www.localhealth.org.uk](http://www.localhealth.org.uk))

**Figure 4: Hospital Admissions Due to Unintentional and Deliberate Injuries to Children Aged 0-14, Rate per 10,000**



Source: Office for National Statistics, Health and Social Care Information Centre, Hospital Episode Statistics, taken from Local Health Profiles ([www.localhealth.org.uk](http://www.localhealth.org.uk))

### What is this data telling us?

The rate of hospital admissions due to unintentional and deliberate injuries to children aged 0-14 in Dudley is 108.4 per 10,000 population which is better than the England rate of 111.7. All localities are better than the England rate except for Dudley Central which is similar. The wards range from 80.6 in Sedgley up to 133.3 in Brockmoor and Pensnett.

## 4.5 Hospital Admissions—aged 15-24

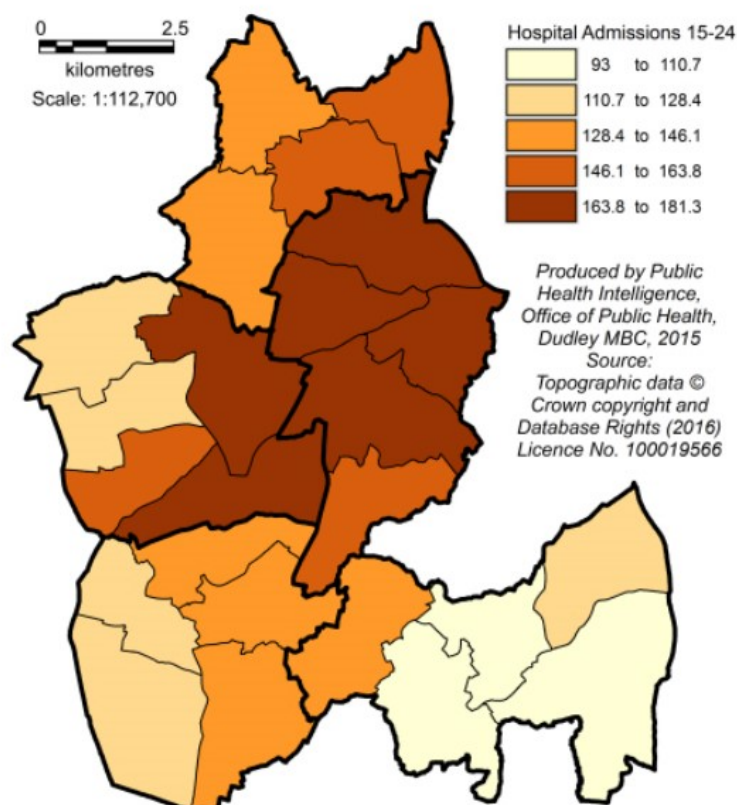
**Table 5: Hospital Admissions Due to Unintentional and Deliberate Injuries to Children and Young People Aged 15-24, 2010/11-2014/15, Rate per 10,000**

	Rate	Eng comp
Brierley Hill	150.0	●
Dudley Central	163.5	●
Dudley North	144.8	●
Halesowen	114.7	●
Stourbridge	128.2	●
<b>Dudley</b>	<b>143.2</b>	●
England	139.5	

● Significantly better than the national rate ● Similar to the national rate ● Significantly worse than the national rate

Source: Office for National Statistics, Health and Social Care Information Centre, Hospital Episode Statistics, taken from Local Health Profiles ([www.localhealth.org.uk](http://www.localhealth.org.uk))

**Figure 5: Hospital Admissions Due to Unintentional and Deliberate Injuries to Children and Young People Aged 15-24, Rate per 10,000**



Source: Office for National Statistics, Health and Social Care Information Centre, Hospital Episode Statistics, taken from Local Health Profiles ([www.localhealth.org.uk](http://www.localhealth.org.uk))

### What is this data telling us?

The rate of hospital admissions due to unintentional and deliberate injuries to children and young people aged 15-24 in Dudley is 143.2 per 10,000 population, this is similar to the England rate of 139.5. Dudley Central is worse than the baseline whereas Brierley Hill and Dudley North are similar and Halesowen and Stourbridge are better. The wards range from 93 in Halesowen South up to 181.3 in St Thomas's.

## 4.6 Hospital stays—self harm

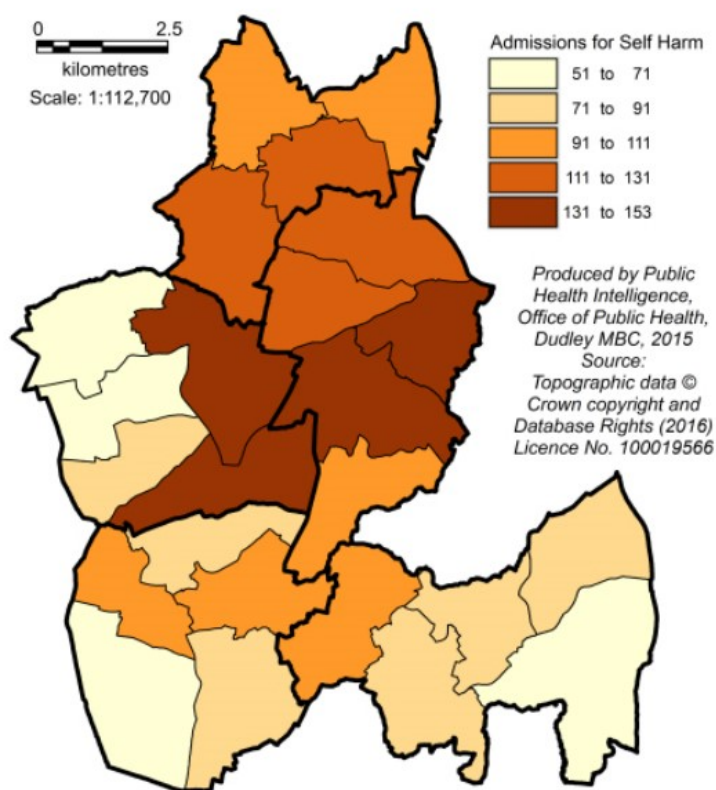
**Table 6: Hospital Admissions for Intentional Self Harm, Standardised Admissions Ratio (SAR), 2010/11-2014/15**

	SAR	Eng comp
Brierley Hill	100.3	○
Dudley Central	130.6	●
Dudley North	107.8	○
Halesowen	84.7	●
Stourbridge	87.0	●
<b>Dudley</b>	<b>102.9</b>	○

● Significantly better than the national rate    ○ Similar to the national rate    ● Significantly worse than the national rate

Source: Health and Social Care Information Centre, Hospital Episode Statistics, taken from Local Health Profiles ([www.localhealth.org.uk](http://www.localhealth.org.uk))

**Figure 6: Hospital Admissions for Intentional Self Harm, Standardised Admissions Ratio (SAR), 2010/11-2014/15**



Source: Health and Social Care Information Centre, Hospital Episode Statistics, taken from Local Health Profiles ([www.localhealth.org.uk](http://www.localhealth.org.uk))

### What is this data telling us?

The Standardised Admissions Ratio of hospital admissions for intentional self harm in Dudley is 102.9, similar to the national baseline. Both Halesowen and Stourbridge have a lower ratio than England. Brierley Hill and Dudley North are similar, whereas Dudley Central is worse and has the highest SAR of 130.6. Across the Borough the Standardised Admissions Ratio ranges between the lowest scoring ward of 51.2 in King-swinford North & Wall Heath up to 152.2 in St Thomas's.

## 4.7 Hospital Stays—Alcohol Harm

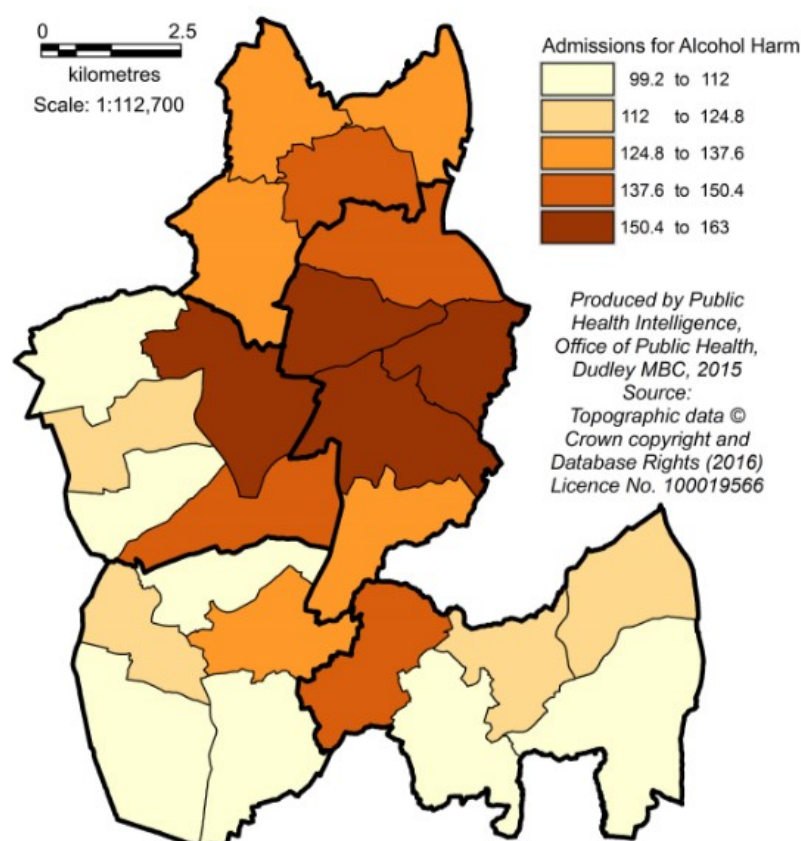
**Table 7: Hospital Admissions for Alcohol Attributable Conditions, Standardised Admissions Ratio (SAR), 2010/11-2014/15**

	SAR	Eng comp
Brierley Hill	125.0	●
Dudley Central	146.6	●
Dudley North	130.4	●
Halesowen	115.5	●
Stourbridge	113.4	●
<b>Dudley</b>	<b>126.1</b>	●

● Significantly better than the national rate ● Similar to the national rate ● Significantly worse than the national rate

Source: Health and Social Care Information Centre, Hospital Episode Statistics, taken from Local Health Profiles ([www.localhealth.org.uk](http://www.localhealth.org.uk))

**Figure 7: Hospital Admissions for Alcohol Attributable Conditions, Standardised Admissions Ratio (SAR), 2010/11-2014/15**



Source: Health and Social Care Information Centre, Hospital Episode Statistics, taken from Local Health Profiles ([www.localhealth.org.uk](http://www.localhealth.org.uk))

### What is this data telling us?

The Standard Admissions Ratio of hospital admissions for alcohol attributable conditions in Dudley is 125.1, this is worse than the national baseline. All townships within Dudley are worse than the national baseline, the lowest being Stourbridge scoring 113.4.

Across the Borough the Standardised admissions ratio ranges from 99.2 in Halesowen South, up to 163 in Brockmoor and Pensnett.



## 4.8 Risk factors identified at initial assessment—Children Safeguarding

**Table 8: Percentage of Single Assessments Completed by the Children Safeguarding Team at Dudley Council, where risk factors were identified, 2015/16**

	Dudley	England
Domestic Violence	21.8%	49.6%
Mental Health	7.9%	36.6%
Drug Misuse	6.3%	19.3%
Alcohol Misuse	6.8%	18.4%
Learning Disability	2.5%	12.2%
Emotional Abuse	8.2%	19.3%
Neglect	12.5%	17.5%
Physical Disability or Illness	4.8%	10.7%
Physical Abuse	18.3%	14.0%
Sexual Abuse	6.4%	6.4%
Other Factors	27.7%	23.1%
Socially Unacceptable Behaviour	2.8%	8.2%
Self-Harm	0.8%	4.3%
Child Sexual Exploitation	2.0%	3.9%
Young Carer	x	3.2%
Going/Being Missing	0.6%	2.7%
Gangs	0.0%	1.2%
Unaccompanied asylum seeker	x	0.6%
Privately Fostered	x	0.4%
Trafficking	0.0%	0.3%

X– Data based on counts of 0 to 5 inclusive has been suppressed  
 Note: A single assessment may have more than one factor recorded

Source: Dudley Council, CIN Census 2015/16, England data from CIND Census Statistical first release

### What is this data telling us?

Within Dudley the top three most common risk factors identified in assessments by the Children Safeguarding Teams were:

- Other Factors 27.7%
- Domestic Violence 21.8%
- Physical Abuse 18.3%

Whereas in England the top three factors are Domestic Violence, Mental Health and Other Factors respectively.

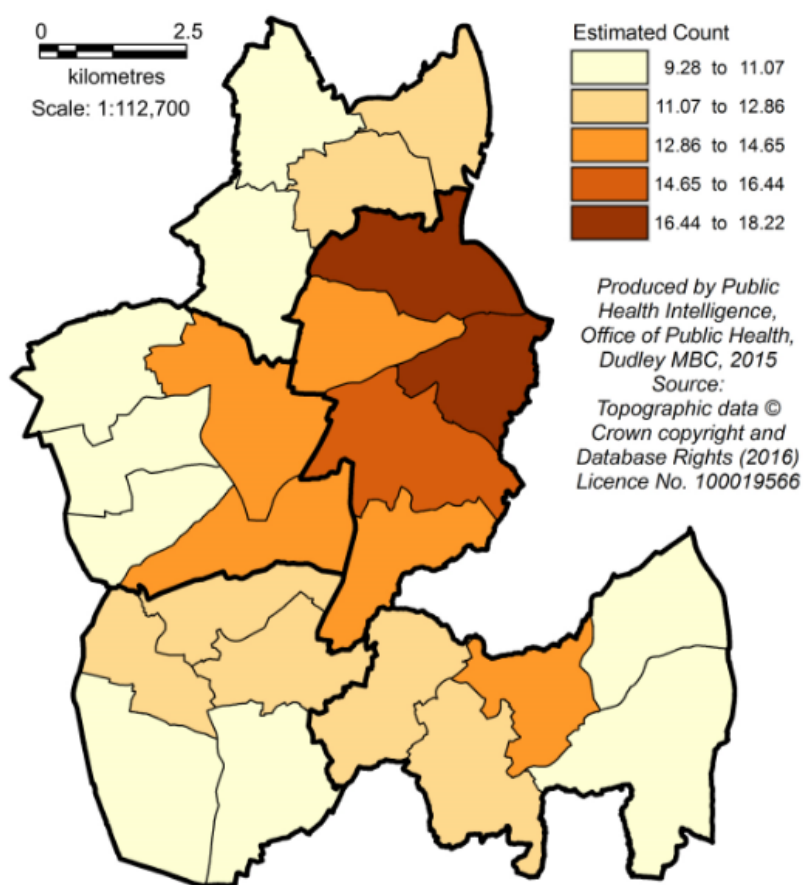
## 4.9 Child Protection Plans

**Table 9: Estimated number of Children Subject to a Child Protection Plan, 2011/12 to 2015/16 (aged 0-17)**

	2011/12	2012/13	2013/14	2014/15	2015/16
Brierley Hill	49	51	57	58	58
Dudley Central	64	67	75	77	78
Dudley North	38	39	43	44	44
Halesowen	49	50	56	57	58
Stourbridge	47	48	54	55	54
<b>Dudley</b>	<b>247</b>	<b>255</b>	<b>284</b>	<b>291</b>	<b>293</b>

Source: Characteristics of Child in Need from [www.gov.uk](http://www.gov.uk) applied to Office for National Statistics, Mid Year Estimates by Output Area

**Figure 8: Estimated number of Children Subject to a Child Protection Plan 2015/16 (aged 0-17)**



Source: Dudley Council, Office for National Statistics, Mid Year Estimates by Output Area

### What is this data telling us?

Dudley Central is the locality with the highest estimated number of children subject to a protection plan, in contrast the locality with the lowest estimated number is Dudley North, with 44 in 2015/16.

Note: These numbers in Table 9 are estimated using national prevalence rates applied to the population figures, therefore variation in the numbers reflect population differences rather than different rates of disability. These numbers should be used as indicators of prevalence only.

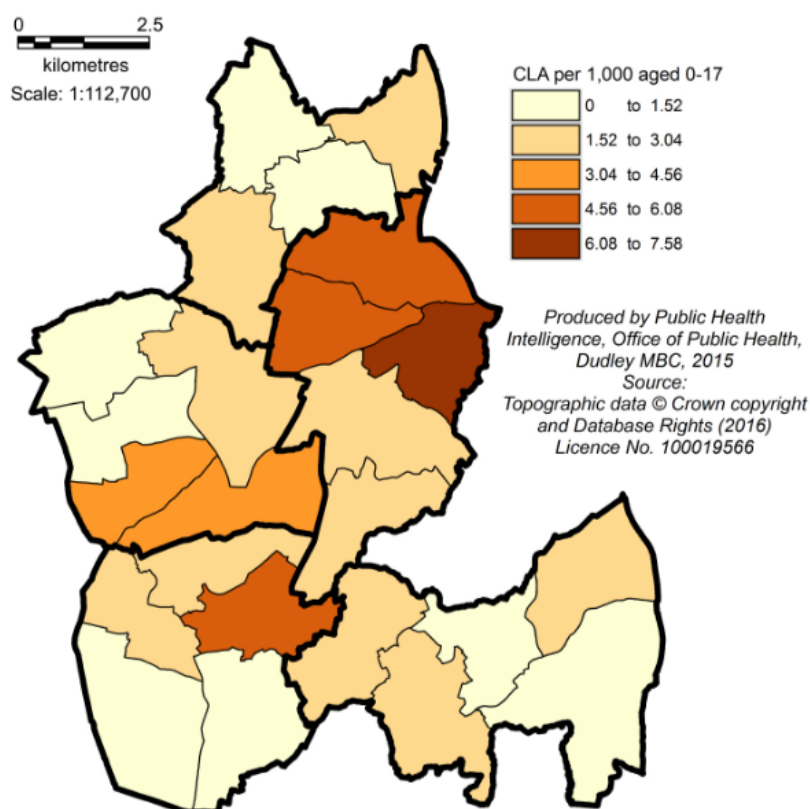
## 4.10 Children Looked After

**Table 10: Children Becoming Looked After, 2014/15 to 2015/16, Rate per 1,000 population**

	Rate per 1,000 population aged 0-17	
	2014/15	2015/16
Brierley Hill	2.52	2.30
Dudley Central	3.72	4.46
Dudley North	2.23	1.55
Halesowen	1.61	1.79
Stourbridge	2.12	2.53
<b>Dudley</b>	<b>2.57</b>	<b>2.71</b>

Source: Dudley council, Office for National Statistics, Mid Year Estimates by Output Area

**Figure 9: Rate of Children Becoming Looked After 2015/16 by Ward, Rate per 1,000 population**



Source: Dudley council : Office for National Statistics, Mid Year Estimates by Output Area

### What is this data telling us?

The rate of children becoming looked after in Dudley per 1,000 population aged 0-17 has increased very slightly between 2014/15 and 2015/16 from 2.57 to 2.71 respectively. The locality with the highest rate is Dudley Central in both years. The lowest in 2015/16 is Dudley North.

Across the borough in the most recent year the rate per 1,000 aged 0-17 varies from 0 up to 7.57, Halesowen South had a value of 0 and at the other end of the spectrum St Thomas' had the highest rate.

## 4.11 Homelessness

**Table 11: Homeless Decisions and Acceptances**

			2011/12	2012/13	2013/14	2014/15	2015/16
Total Homeless decisions	Dudley	Count	1,944	1,934	1,870	1,862	1,695
		Per 1,000 HHs	15.31	14.88	14.28	14.16	12.84
	England	Per 1,000 HHs	5.00	5.09	4.96	4.95	5.00
		Non London LA's	Per 1,000 HHs		4.16	4.17	4.26
Homeless Acceptances (Eligible, Unintentional and Priority Need)	Dudley	Count	158	171	150	100	70
		Per 1,000 HHs	1.24	1.32	1.15	0.76	0.53
	England	Per 1,000 HHs	2.31	2.41	2.32	2.40	2.52
		Non London LA's	Per 1,000 HHs		1.84	1.91	1.98
Of which 16-24 (Age at end of reporting quarter)	Dudley	Count	42	49	18	18	7
		Per 1,000 HHs	0.33	0.38	0.14	0.14	0.05
		% of all	26.6%	28.7%	12.0%	18.0%	10.0%
	England	Per 1,000 HHs	0.80	0.75	0.64	0.59	0.58
		% of all	34.6%	31.3%	27.6%	24.8%	23.0%
Families Accepted (Couples or Single parents with dependent children, includes pregnant with no other dependents)	Dudley	Count	115	121	108	66	48
		Per 1,000 HHs	0.91	0.93	0.82	0.5	0.36
		% of all	72.8%	70.8%	72.0%	66.0%	68.6%
	England	Per 1,000 HHs	1.65	1.71	1.62	1.73	1.83
		% of all	71.4%	70.8%	69.7%	72.1%	72.7%

Source: Dudley Council , Homelessness quarterly return P1E

### What is this data telling us?

In 2015/16 Dudley council made a total of 1,695 homeless decisions, of these 70 were accepted as homeless, a rate of 0.52 per 1,000 households, which is much lower than the England rate of 2.52 per 1,000 households.

Of the homeless acceptances by Dudley Borough in 2015/16, 10% were young people aged 16-24, less than half the England rate of 23%.

Families with dependant children make up the majority of those accepted, in 2015/16 68.6% fell in this category.



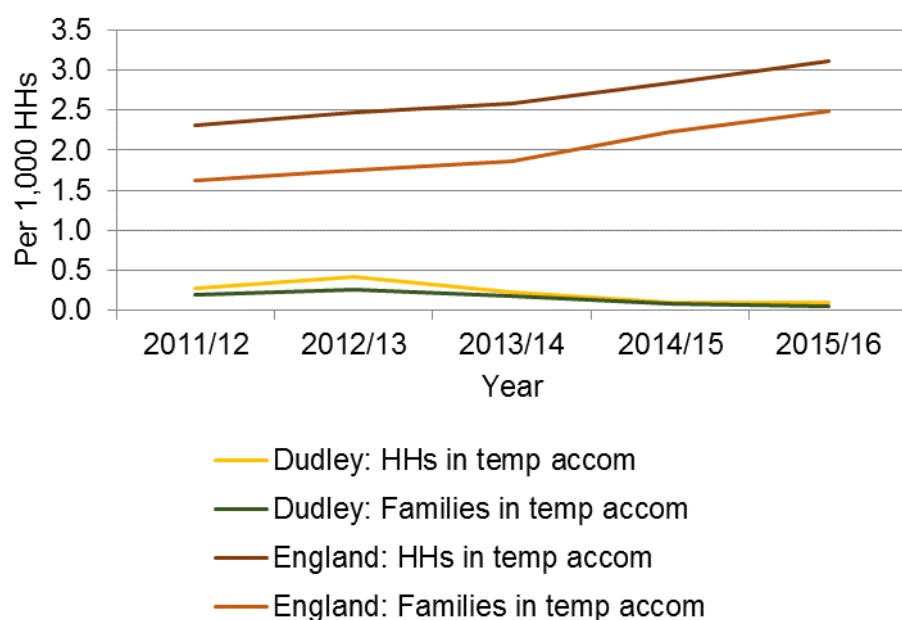
## 4.12 Households in Temporary Accommodation

**Table 12: Households in Temporary Accommodation**

			2011/12	2012/13	2013/14	2014/15	2015/16
Temporary Accommodation	Dudley	Count	36	55	29	14	12
		Per 1,000 HHs	0.28	0.42	0.22	0.10	0.09
	England	Per 1,000 HHs	2.32	2.48	2.59	2.85	3.12
		Per 1,000 HHs			0.79	0.85	1.01
Families (Couples or Single parents with dependent children, includes pregnant with no other dependents)	Dudley	Count	26	32	23	11	6
		Per 1,000 HHs	0.20	0.25	0.18	0.08	0.05
		% of all	72.2%	58.2%	79.3%	78.6%	50.0%
	England	Per 1,000 HHs	1.63	1.75	1.86	2.23	2.49
		% of all	69.6%	68.0%	68.5%	74.1%	74.6%

Source: Dudley council, Homelessness quarterly return P1E

**Figure 10: Households in Temporary Accommodation 2011/12 to 2015/16**



Source: Dudley council, Homelessness quarterly return P1E

### What is this data telling us?

The overall rate of households in temporary accommodation in Dudley has decreased from 0.28 in 2011/12 to 0.09 in 2015/16 per 1,000 households. The rates for Dudley over this time period are well below the rates of England and Non London LA's.

There were a total of 12 households in Dudley placed in temporary accommodation in 2015/16, of these 6 were families with dependant children.

## 4.13 Crime and Anti-Social Behaviour: Overall Crime

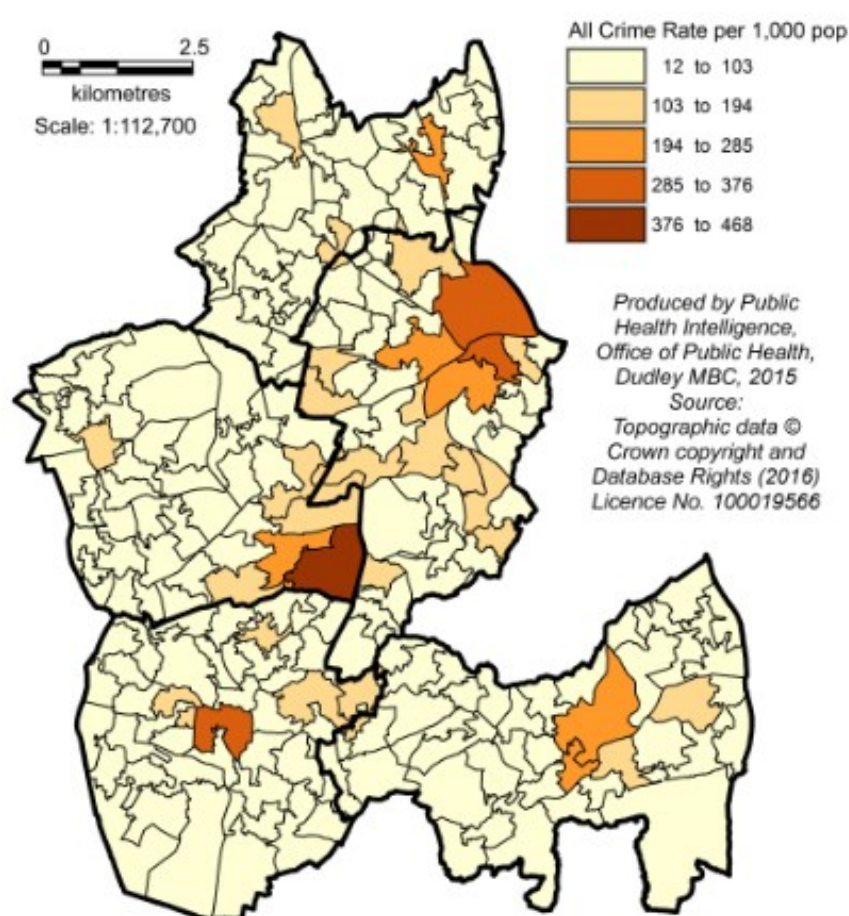
Overall Crime gives a total rate for all individual categories except antisocial behaviour.

**Table 13: Overall Crime Rate per 1,000 Population**

	2016
<b>Dudley</b>	<b>74.6</b>
England	71.4

Source: Local data: data.police.uk January to December 2016, rates calculated using Office for National Statistics, Mid Year Population Estimates, 2015. National data: Office for National Statistics, Crime in England and Wales: Police Force Area Data tables.

**Figure 11: Overall Crime Rate per 1,000 Population**



Source: data.police.uk January to December 2016, rates calculated using Office for National Statistics Mid year Population Estimates, 2015

### What is this data telling us?

The overall crime rate in Dudley is 74.6 per 1,000 population. This is above the England rate of 71.4.

Across the Borough, rates for 2015/16 are between 12.1 and 467.9 per 1,000, however 83% of the LSOA's in the Borough are under 100 rate per 1,000. The area with the highest levels of crime is the Merry Hill shopping centre.

## 4.14 Crime and ASB: Bicycle Theft

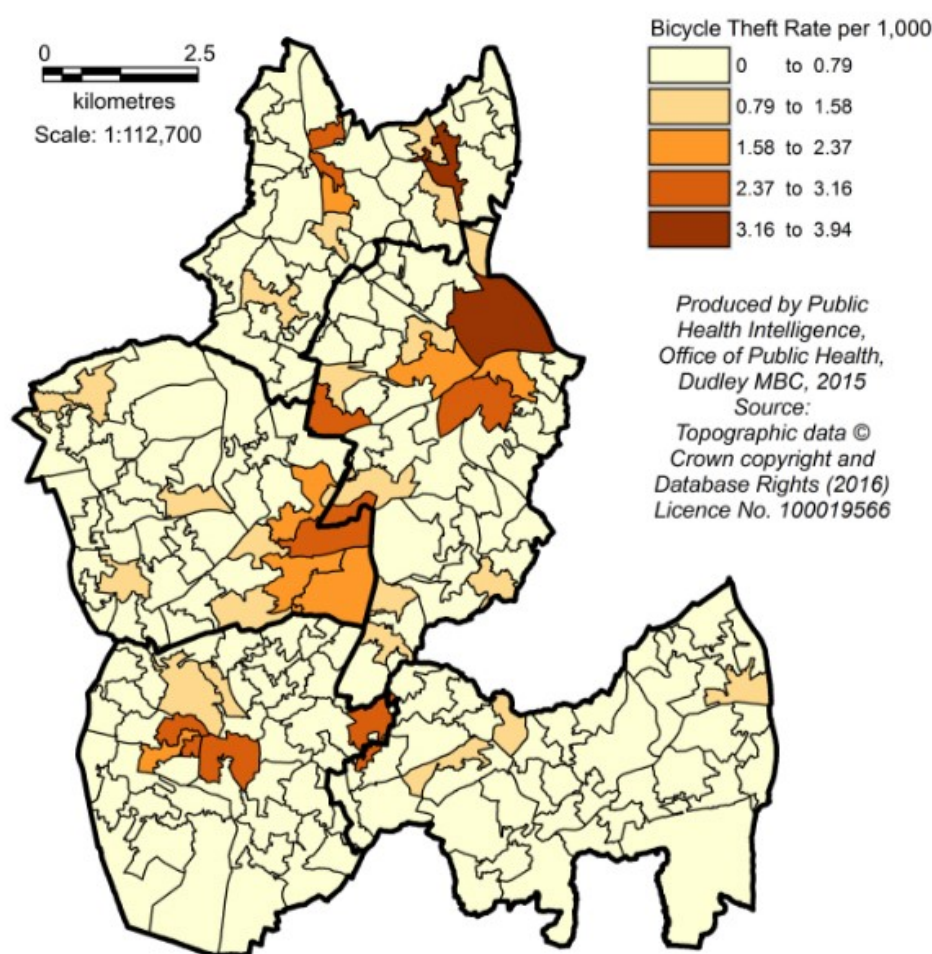
**Bicycle theft:** includes the taking without consent or theft of a pedal bicycle

**Table 14: Bicycle Theft Rate per 1,000 Population**

	2016
<b>Dudley</b>	<b>0.5</b>
England	1.5

Source: Local data: data.police.uk January to December 2016, rates calculated using Office for National Statistics, Mid Year Population Estimates, 2015. National data: Office for National Statistics, Crime in England and Wales: Police Force Area Data tables.

**Figure 12: Bicycle Theft Rate per 1,000 Population**



Source: data.police.uk January to December 2016, rates calculated using Office for National Statistics Mid year Population Estimates, 2015

### What is this data telling us?

The rate of bicycle thefts in Dudley is 0.5 per 1,000 population, which is a third of the England rate of 1.5 per 1,000 population.

Across the Borough the rates vary between 0 and 3.94 however 62% of the LSOA's have a rate of zero. Castle and Priory have the highest rate of bicycle theft.

## 4.15 Crime and ASB: Burglary

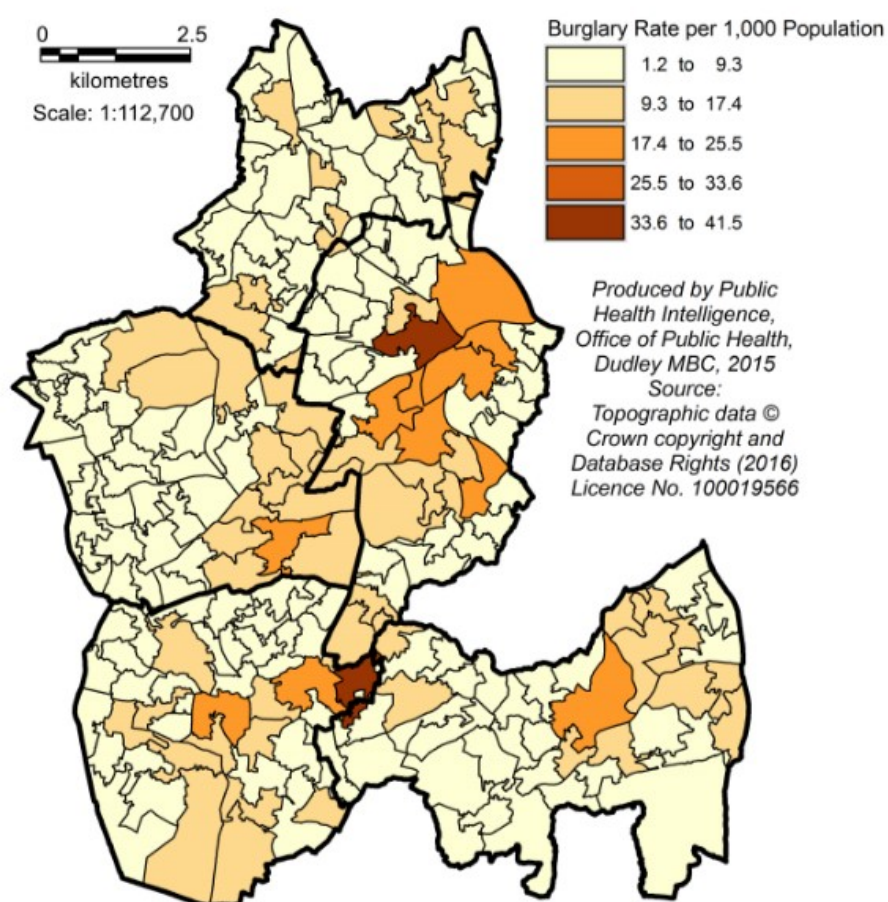
**Burglary:** Includes offences where a person enters a house or other building with the intention of stealing.

**Table 15: Burglary Rate per 1,000 Population**

	2016
<b>Dudley</b>	<b>8.3</b>
England	7.1

Source: Local data: data.police.uk January to December 2016, rates calculated using Office for National Statistics, Mid Year Population Estimates, 2015. National data: Office for National Statistics, Crime in England and Wales: Police Force Area Data tables.

**Figure 13: Burglary Rate per 1,000 Population**



### What is this data telling us?

The rate of burglaries in Dudley is 8.3 per 1,000 population, this is higher than the England rate of 7.1 per 1,000 population. St James's has the highest rates within the Borough.

The rates vary within the Borough between 1.3 and 41.4 per 1,000 population, however 74% have a rate below 10.



4.16 Crime and ASB: Criminal Damage and Arson

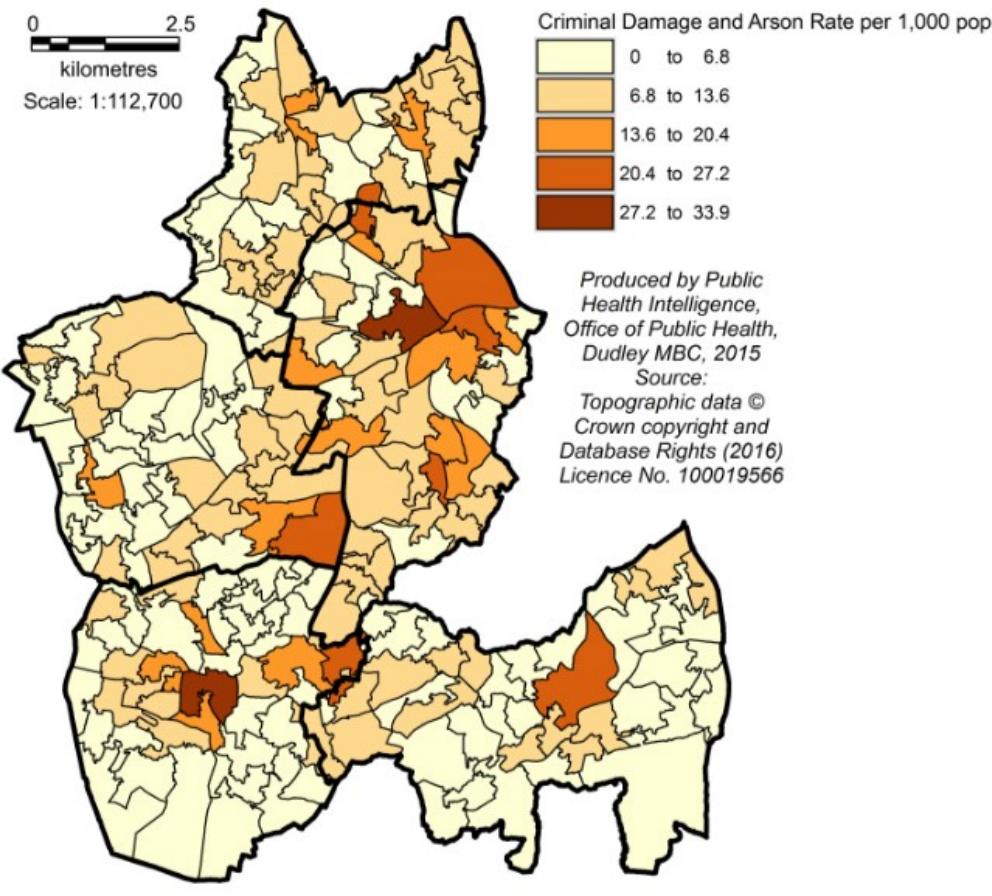
Criminal damage and arson: includes damage to buildings and vehicles and deliberate damage by fire.

Table 16: Criminal Damage and Arson Rate per 1,000 Population

	2016
Dudley	7.8
England	9.5

Source: Local data: data.police.uk January to December 2016, rates calculated using Office for National Statistics, Mid Year Population Estimates, 2015. National data: Office for National Statistics, Crime in England and Wales: Police Force Area Data tables.

Figure 14: Criminal Damage and Arson Rate per 1,000 Population



Source: data.police.uk January to December 2016, rates calculated using Office for National Statistics Mid year Population Estimates, 2015

What is this data telling us?

The rate of criminal damage and arson in Dudley is 7.8 per 1,000 population which is below the England rate of 9.5. The area with the highest rate is in St James.

The rates vary across the Borough from 0 to 33.8 rate per 1,000 population, however 74% of the LSOA's have a rate below 10.

## 4.17 Crime and ASB: Drugs

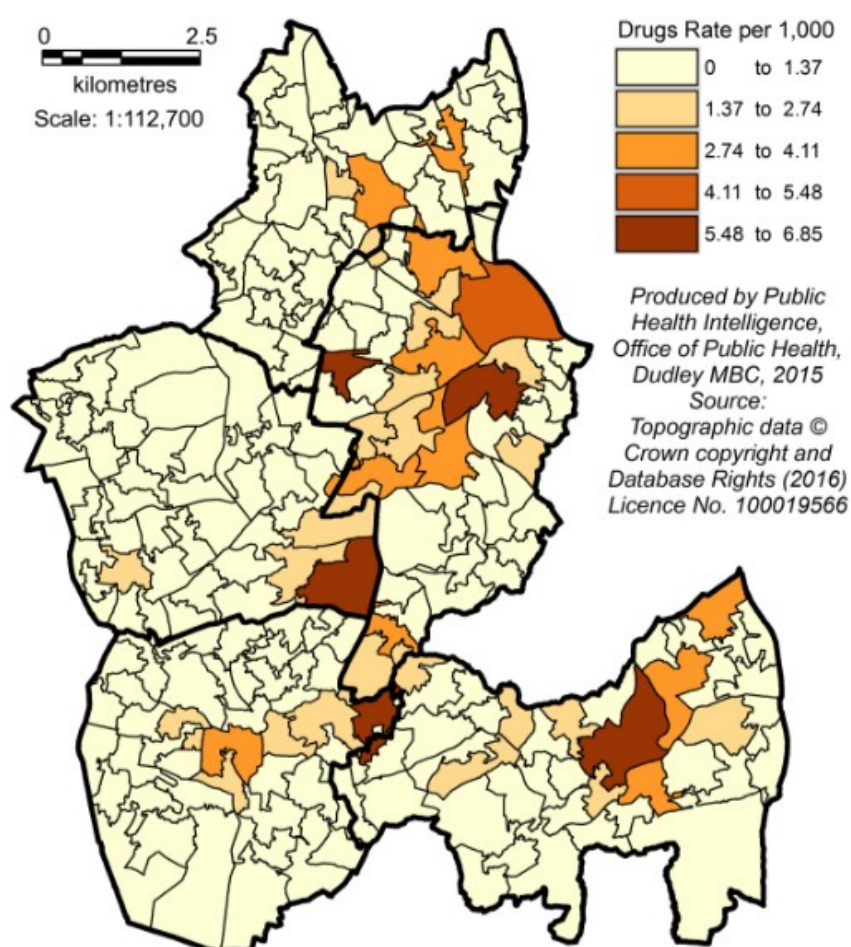
**Drugs:** Includes offences related to possession, supply and production.

**Table 17: Drugs Rate per 1,000 Population**

	2016
<b>Dudley</b>	<b>0.9</b>
England	2.4

Source: Local data: data.police.uk January to December 2016, rates calculated using Office for National Statistics, Mid Year Population Estimates, 2015. National data: Office for National Statistics, Crime in England and Wales: Police Force Area Data tables.

**Figure 15: Drugs Rate per 1,000 Population**



Source: data.police.uk January to December 2016, rates calculated using Office for National Statistics Mid year Population Estimates, 2015

What is this data telling us?

The rate of drugs offences in Dudley is 0.9 per 1,000 population, well below the England rate of 2.4.

The rates vary across the Borough between 0 to 6.8 per 1,000 population, however 47% of the LSOA's have a rate of zero.

## 4.18 Crime and ASB: Other Crime

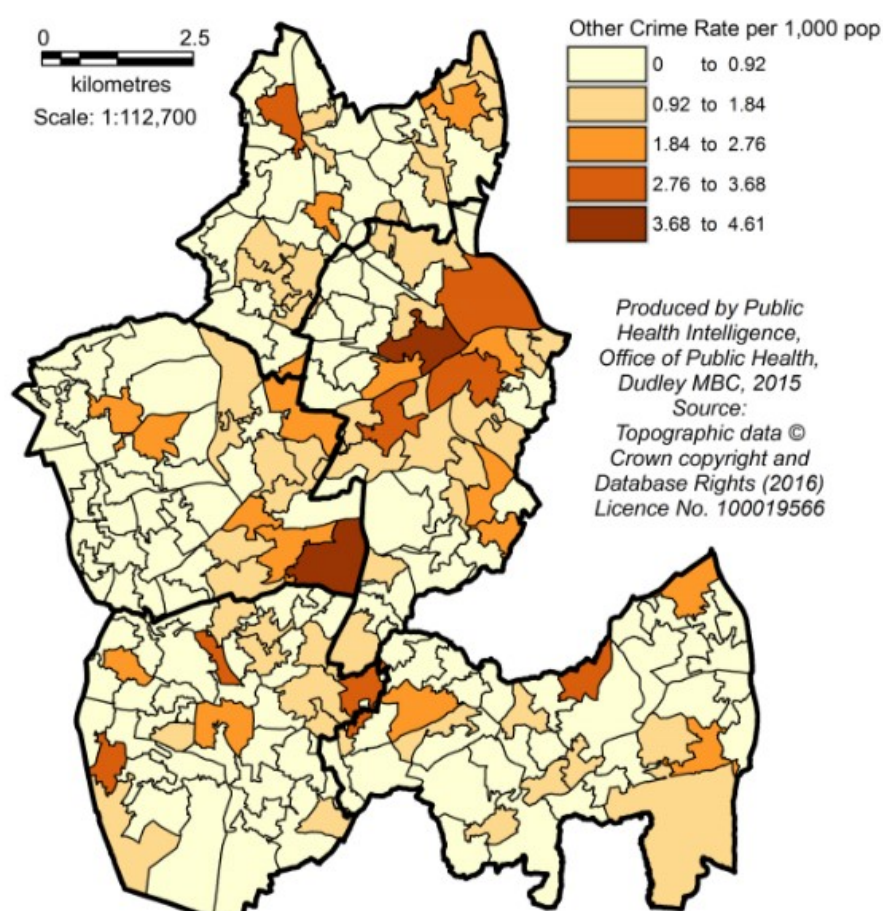
**Other crime:** Includes forgery, perjury and other miscellaneous crime

**Table 18: Other Crime rate per 1,000 Population**

	2016
<b>Dudley</b>	<b>0.9</b>
<b>England</b>	<b>1.2</b>

Source: Local data: data.police.uk January to December 2016, rates calculated using Office for National Statistics, Mid Year Population Estimates, 2015. National data: Office for National Statistics, Crime in England and Wales: Police Force Area Data tables.

**Figure 16: Other Crime Rate per 1,000 Population**



Source: data.police.uk January to December 2016, rates calculated using Office for National Statistics Mid year Population Estimates, 2015

### What is this data telling us?

The rate of 'other crime' in Dudley is 0.9 per 1,000 population, which is below the England rate of 1.2. The rates vary across the Borough with no particular geographical rule.

The rates vary between 0 and 4.6, however 36% of the LSOA's have a rate of zero.



## 4.19 Crime and ASB: Other theft

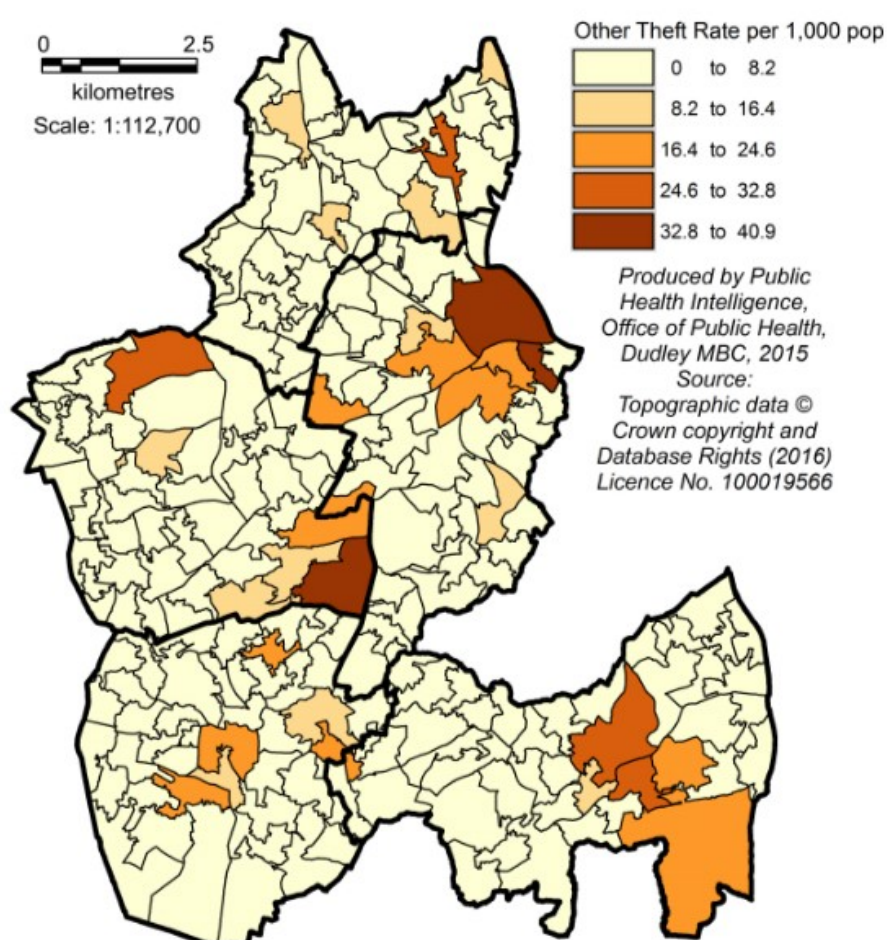
**Other crime:** Includes forgery, perjury and other miscellaneous crime

**Table 19: Other Theft Rate per 1,000 Population**

	2016
<b>Dudley</b>	<b>5.2</b>
England	8.4

Source: Local data: data.police.uk January to December 2016, rates calculated using Office for National Statistics, Mid Year Population Estimates, 2015. National data: Office for National Statistics, Crime in England and Wales: Police Force Area Data tables.

**Figure 17: Other Theft Rate per 1,000 Population**



Source: data.police.uk January to December 2016, rates calculated using Office for National Statistics Mid year Population Estimates, 2015

### What is this data telling us?

The rate of 'other theft' in Dudley is 5.2 per 1,000 population which is well below the England rate of 8.4.

The rates across the Borough varies between 0 and 40.9 per 1,000 population, however 89% of the LSOA's have a rate under 10.



## 4.20 Crime and ASB: Possession of Weapons

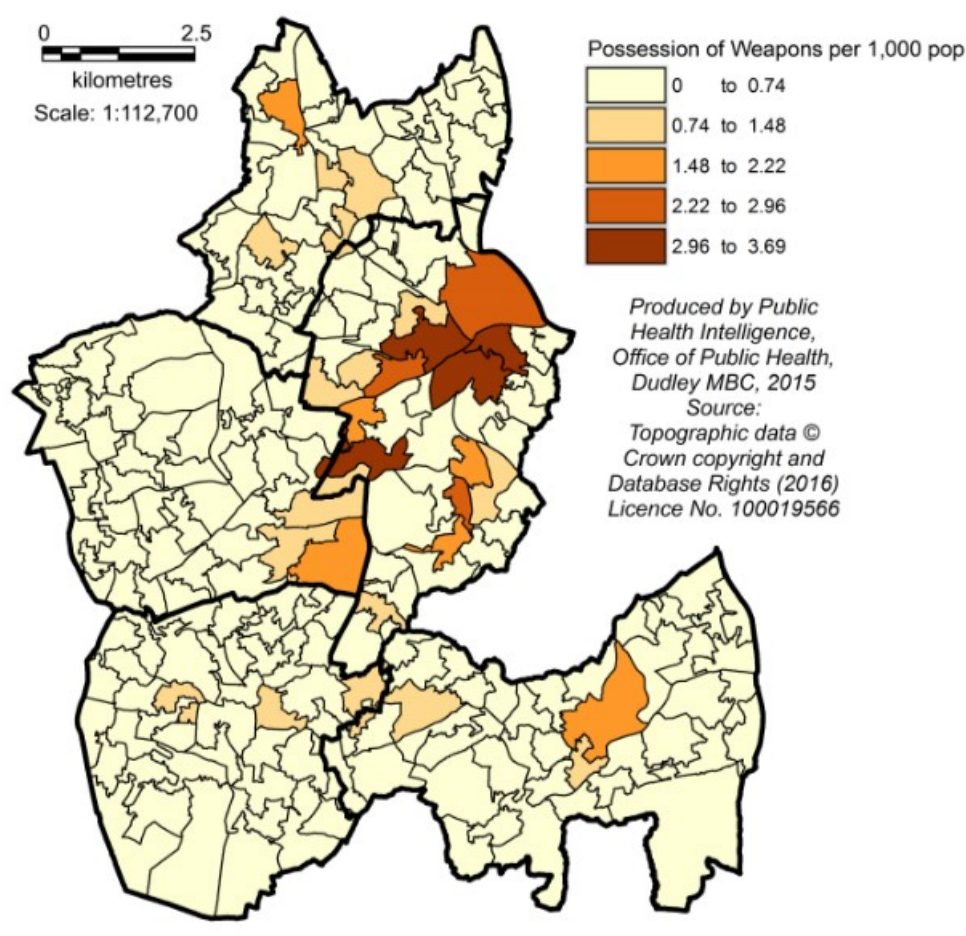
**Possessions of weapons:** Includes possession of a weapon, such as a firearm or knife

**Table 20: Possession of Weapons Rate per 1,000 Population**

	2016
<b>Dudley</b>	<b>0.4</b>
England	0.5

Source: Local data: data.police.uk January to December 2016, rates calculated using Office for National Statistics, Mid Year Population Estimates, 2015. National data: Office for National Statistics, Crime in England and Wales: Police Force Area Data tables.

**Figure 18: Possession of Weapons Rate per 1,000 Population**



Source: data.police.uk January to December 2016, rates calculated using Office for National Statistics Mid year Population Estimates, 2015

### What is this data telling us?

The rate of possession of weapons in Dudley is 0.4 per 1,000 population which is just below the England rate of 0.5. The areas which the highest rates are found in the Dudley Central township.

The rates vary across the Borough between 0 and 3.7 per 1,000 population, however 67% of the LSOA's have a rate of zero.

## 4.21 Crime and ASB: Public Order

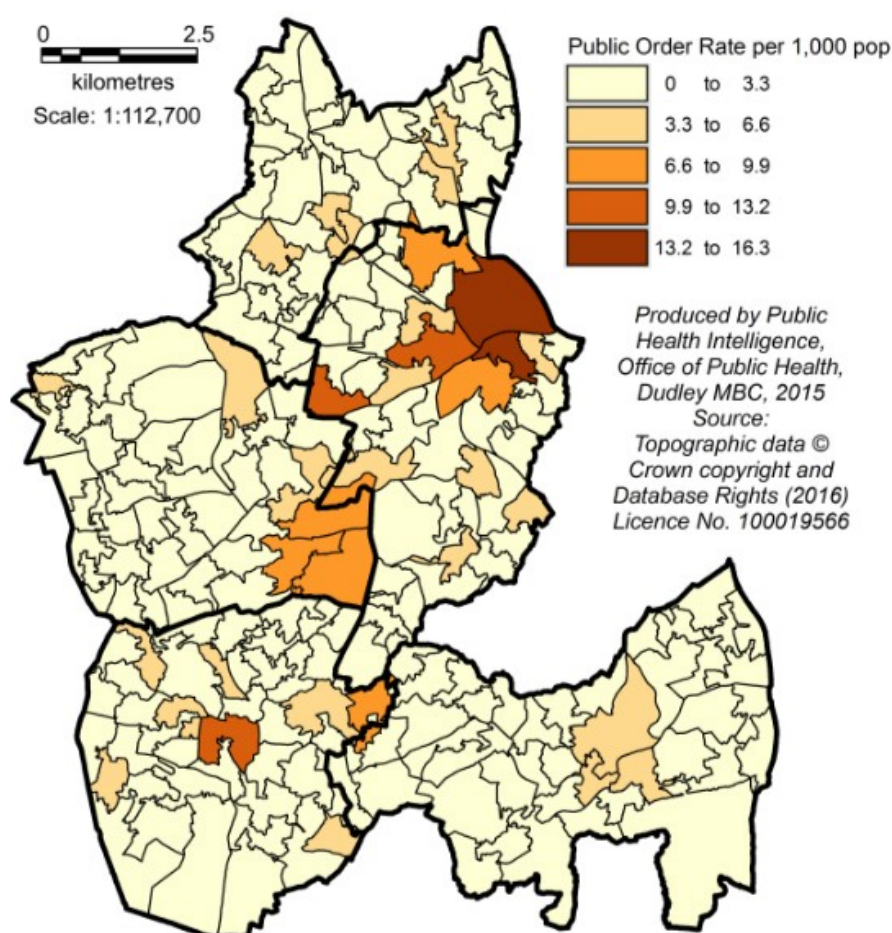
**Public order:** Includes offences which cause fear, alarm or distress

**Table 21: Public Order Rate per 1,000 Population**

	2016
<b>Dudley</b>	<b>2.2</b>
<b>England</b>	<b>4.3</b>

Source: Local data: data.police.uk January to December 2016, rates calculated using Office for National Statistics, Mid Year Population Estimates, 2015. National data: Office for National Statistics, Crime in England and Wales: Police Force Area Data tables.

**Figure 19: Public Order Rate per 1,000 Population**



Source: data.police.uk January to December 2016, rates calculated using Office for National Statistics Mid year Population Estimates, 2015

### What is this data telling us?

The rate of public order offences per 1,000 population in Dudley is 2.2 per 1,000 population which is almost half the England rate of 4.3. The highest rates are focused around the Castle & Priory, St James's and St Thomas' areas.

The rates across the Borough vary between 0 and 16.3, however 98% of the LSOA's have a rate below 10 per 1,000.

## 4.22 Crime and ASB: Robbery

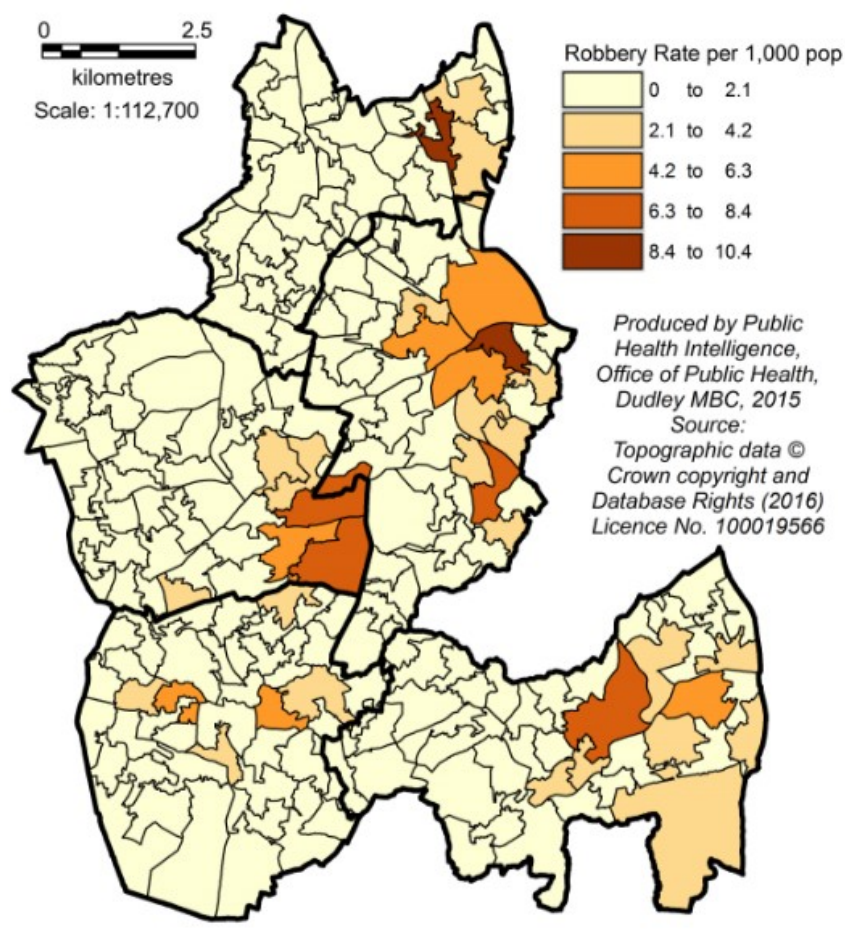
**Robbery:** Includes offences where a person uses force or threat of force to steal

**Table 22: Robbery Rate per 1,000 Population**

	2016
<b>Dudley</b>	<b>1.3</b>
England	1.0

Source: Local data: data.police.uk January to December 2016, rates calculated using Office for National Statistics, Mid Year Population Estimates, 2015. National data: Office for National Statistics, Crime in England and Wales: Police Force Area Data tables.

**Figure 20: Robbery Rate per 1,000 Population**



Source: data.police.uk January to December 2016, rates calculated using Office for National Statistics Mid year Population Estimates, 2015

### What is this data telling us?

The rate of robbery per 1,000 population in Dudley is 1.3 which is higher than the England rate of 1.0 per 1,000 population.

Across the Borough the rates vary between 0 to 10.3 per 1,000 population, however 96% of the LSOA's have a rate below 5 per 1,000 population and a third have a rate of zero.



## 4.23 Crime and ASB: Shoplifting

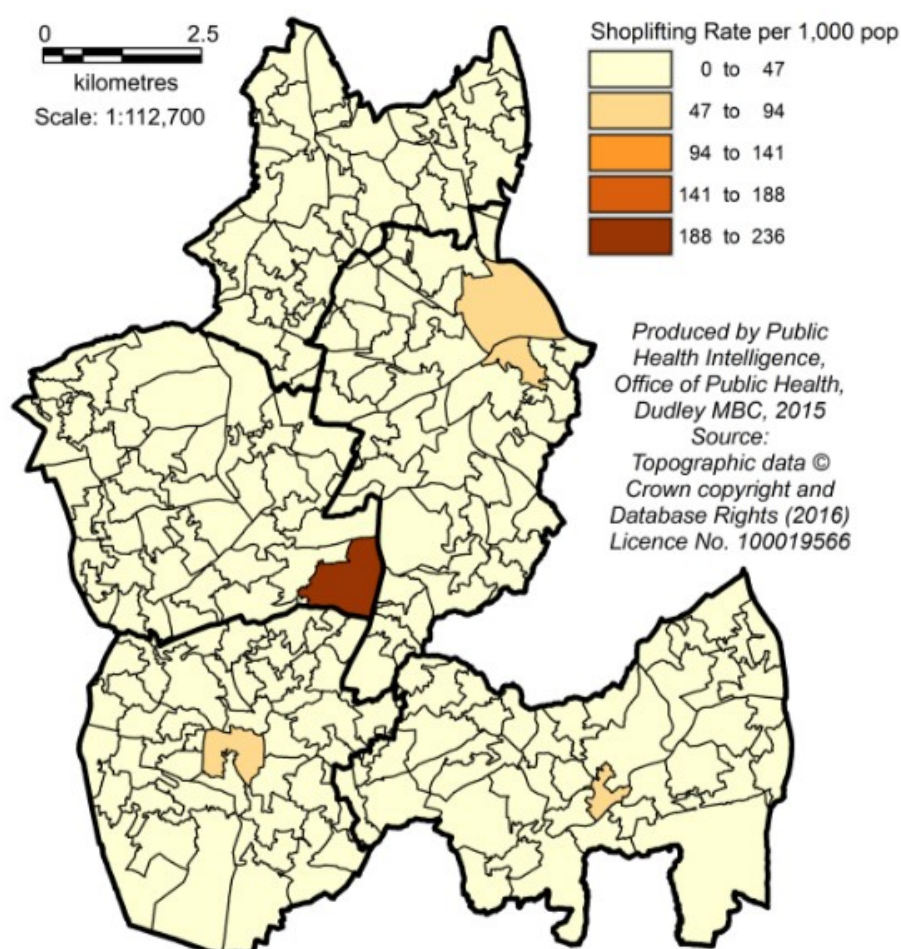
**Shoplifting:** Includes theft from shops or stalls

**Table 23: Shoplifting rate per 1,000 population**

	2016
<b>Dudley</b>	<b>6.7</b>
England	6.2

Source: Local data: data.police.uk January to December 2016, rates calculated using Office for National Statistics, Mid Year Population Estimates, 2015. National data: Office for National Statistics, Crime in England and Wales: Police Force Area Data tables.

**Figure 21: Shoplifting rate per 1,000 population**



Source: data.police.uk January to December 2016, rates calculated using Office for National Statistics Mid year Population Estimates, 2015

### What is this data telling us?

The rate per 1,000 population of shoplifting in Dudley is 6.7 which is similar but higher than the England rate of 6.2 per 1,000 population. The highest rate of 235.2 is found in Brierley in particular the LSOA where Merry Hill shopping centre is located. The next highest rate is 82.4 quite a drop compared to Merry Hill.

The rest of the Borough mostly has rates in line with the England rate, with 80% of the LSOA's having a rate of 6.2 or lower and 53% having a rate of zero.

## 4.24 Crime and ASB: Theft From the Person

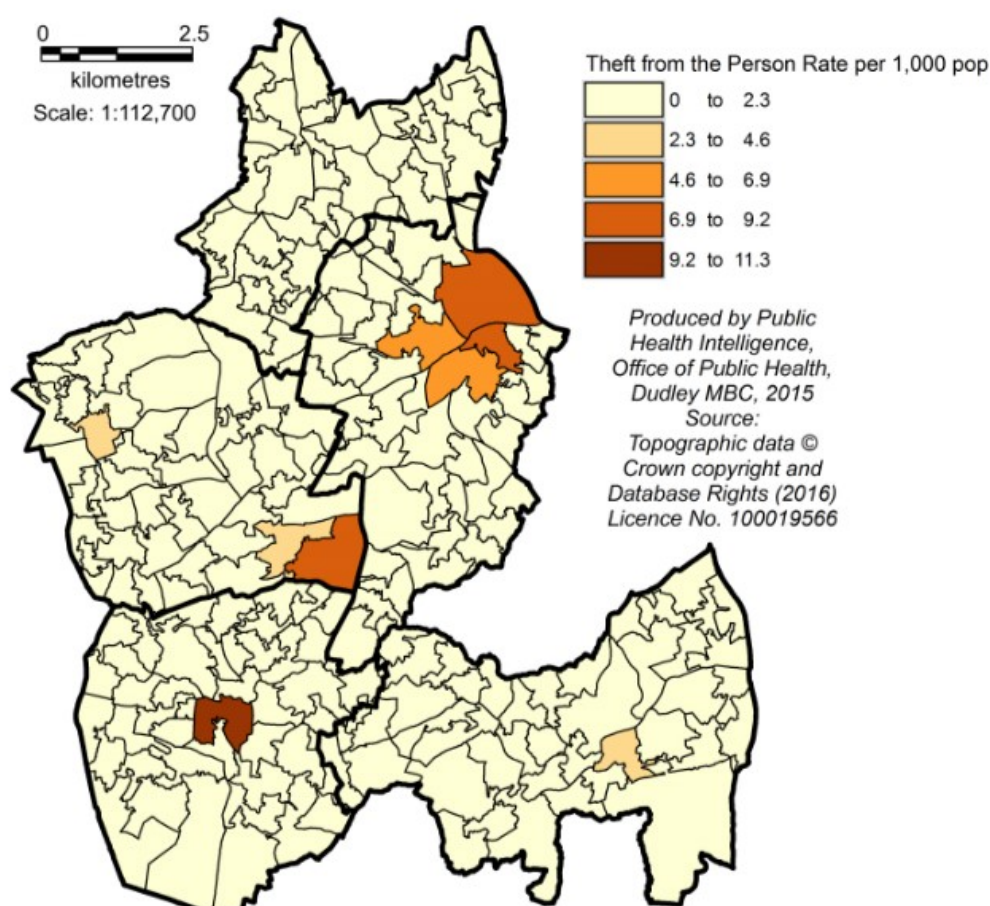
**Theft from the person:** Includes crimes that involve theft directly from the victim (including handbag, wallet, cash, mobile phones)

**Table 24: Theft From the Person Rate per 1,000 Population**

	2016
<b>Dudley</b>	<b>0.6</b>
England	1.5

Source: Local data: data.police.uk January to December 2016, rates calculated using Office for National Statistics, Mid Year Population Estimates, 2015. National data: Office for National Statistics, Crime in England and Wales: Police Force Area Data tables.

**Figure 22: Theft From the Person Rate per 1,000 Population**



Source: data.police.uk January to December 2016, rates calculated using Office for National Statistics Mid year Population Estimates, 2015

### What is this data telling us?

The rate of theft from the person in Dudley is 0.6 per 1,000 population, much lower than the England rate of 1.5 per 1,000 population. Dudley Central township has the highest number of LSOA's with rates over 4.6.

Across the Borough the rates vary between 0 and 11.3 per 1,000, however 88% of the LSOA's have a rate below 1 per 1,000 population.



4.25 Crime and ASB: Vehicle crime

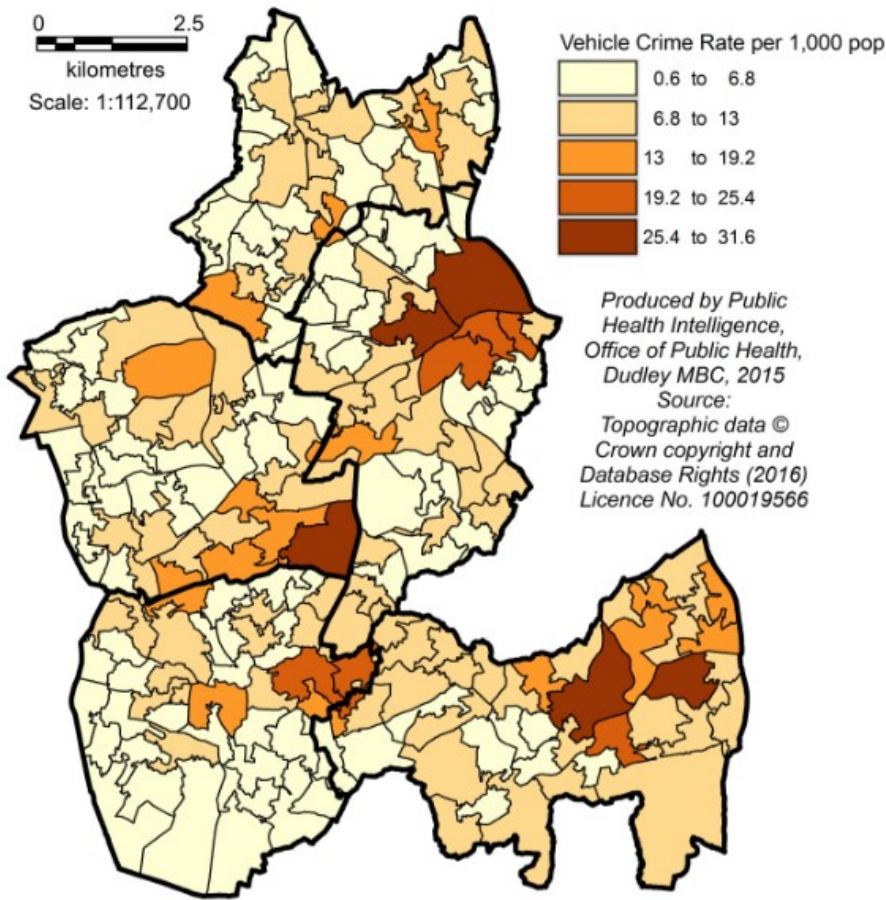
Vehicle crime: Includes theft from or of a vehicle or interference with a vehicle

Table 25: Vehicle Crime Rate per 1,000 Population

	2016
Dudley	8.5
England	6.8

Source: Local data: data.police.uk January to December 2016, rates calculated using Office for National Statistics, Mid Year Population Estimates, 2015. National data: Office for National Statistics, Crime in England and Wales: Police Force Area Data tables.

Figure 23: Vehicle Crime Rate per 1,000 Population



Source: data.police.uk January to December 2016, rates calculated using Office for National Statistics Mid year Population Estimates, 2015

What is this data telling us?

The rate of vehicle crime in Dudley is 8.5 per 1,000 population, higher than the England rate of 6.8.

Across the Borough the rates vary between 0 and 31.6, with no LSOA's having a zero rate, however 72% of the LSOA's have a rate below 10 per 1,000 population.

## 4.26 Crime and ASB: Violence and sexual offences

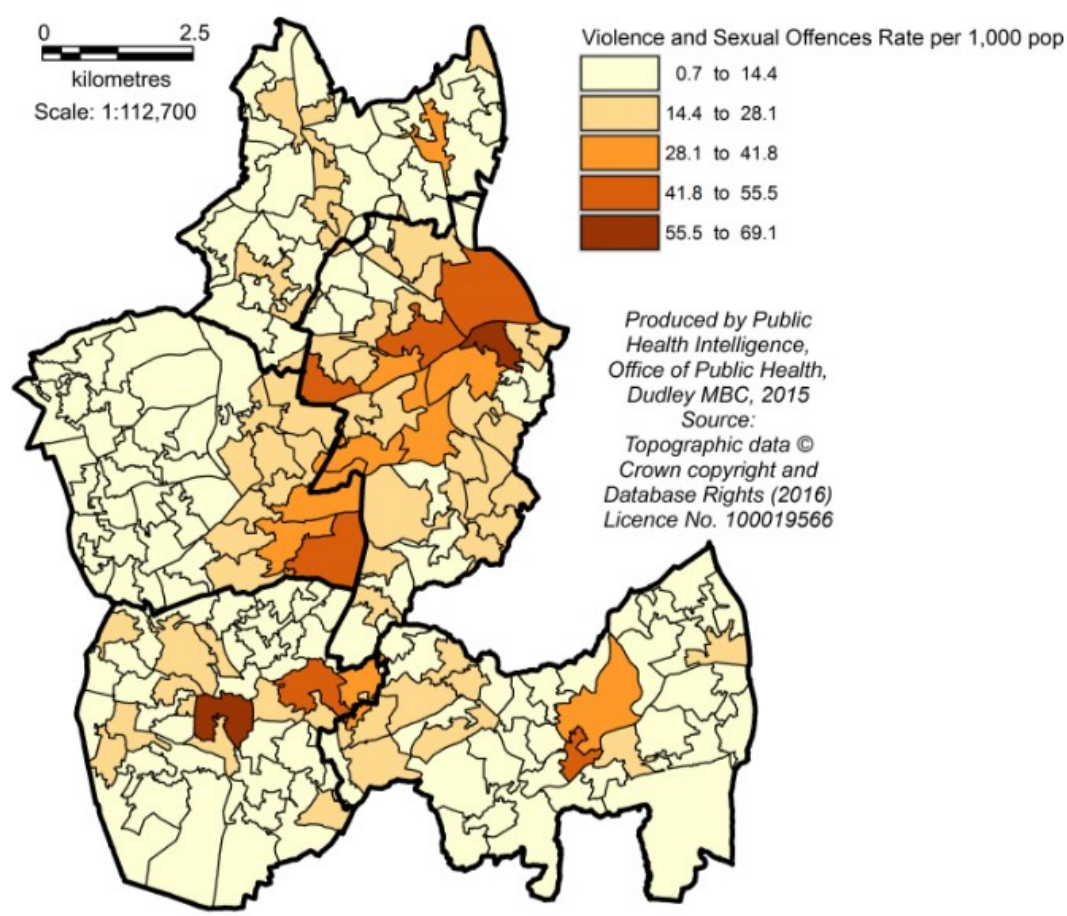
**Violence and sexual offences:** Includes offences against the person such as common assaults, Grievous Bodily Harm and sexual offences.

**Table 26: Violence and Sexual Offences Rate per 1,000 Population**

	2016
<b>Dudley</b>	<b>14.4</b>
England	21.1

Source: Local data: data.police.uk January to December 2016, rates calculated using Office for National Statistics, Mid Year Population Estimates, 2015. National data: Office for National Statistics, Crime in England and Wales: Police Force Area Data tables.

**Figure 24: Violence and Sexual Offences Rate per 1,000**



Source: data.police.uk January to December 2016, rates calculated using Office for National Statistics Mid year Population Estimates, 2015

### What is this data telling us?

The rate of violence and sexual offences in Dudley is 14.4 per 1,000 population which is much lower than the England rate of 21.1.

Across the Borough the rates vary between 0.7 and 69, there are no LSOA's with a rate of zero although 47% have a rate below 10 per 1,000 population.

## 4.27 Crime and ASB: Anti-Social Behaviour

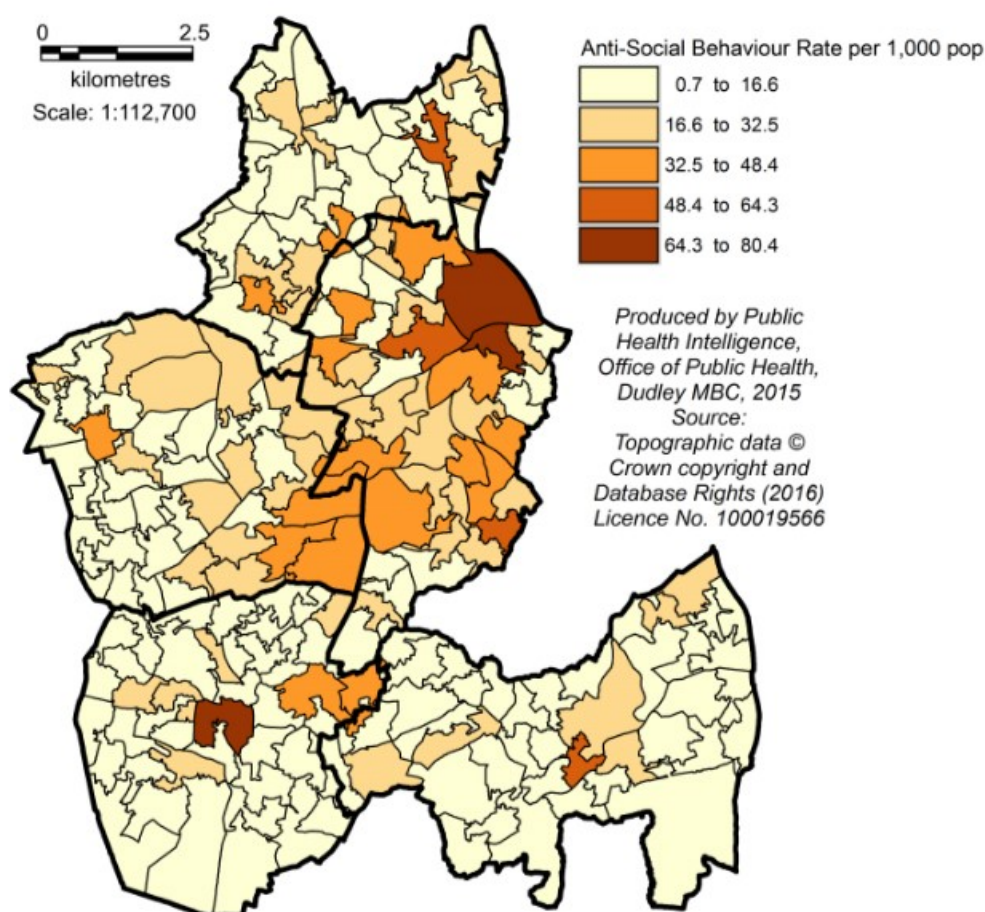
**Anti-social behaviour:** Includes personal, environmental and Nuisance anti-social behaviour.

**Table 27: Anti-Social Behaviour Rate per 1,000 Population**

	2016
<b>Dudley</b>	<b>16.9</b>
England	32.9

Source: Local data: data.police.uk January to December 2016, rates calculated using Office for National Statistics, Mid Year Population Estimates, 2015.

**Figure 25: Anti-Social Behaviour Rate per 1,000 Population**



Source: data.police.uk January to December 2016, rates calculated using Office for National Statistics Mid year Population Estimates, 2015
















### What is this data telling us?




The rate of anti-social behaviour in Dudley is 16.9 per 1,000 population which is much lower than the England rate of 32.9 per 1,000.

Across the Borough the rates vary between 0.8 and 80.3 per 1,000 population, no LSOA's have a zero rate although 40% have a rate below 10 per 1,000 population.

## 4.28 Crime and ASB Overall

**Table 28: Crime and ASB Overall**

	Dudley	England	Difference
Overall Crime	74.6	71.4	
Bicycle Theft	0.5	1.5	
Burglary	8.3	7.1	
Criminal Damage and Arson	7.8	9.5	
Drugs	0.9	2.4	
Other Crime	0.9	1.2	
Other Theft	5.2	8.4	
Possession of Weapons	0.4	0.5	
Public Order	2.2	4.3	
Robbery	1.3	1	
Shoplifting	6.7	6.2	
Theft from the Person	0.6	1.5	
Vehicle Crime	8.5	6.8	
Violence and Sexual Offences	14.4	21.1	
Anti-Social Behaviour	16.9	32.9	

 Significantly better than the national rate 
  Similar to the national rate 
  Significantly worse than the national rate

Source: Local data: data.police.uk January to December 2016, rates calculated using Office for National Statistics, Mid Year Population Esti-

### What is this data telling us?

The areas where Dudley has a rate higher than the England rate are; overall crime, burglary, robbery, shoplifting and vehicle crime. The largest difference being overall crime.

The crime areas Dudley is below the England rate are; bicycle theft, criminal damage, drugs, other crime, other theft, possession of weapons, public order, violence and sexual offences and anti-social behaviour. The area with the largest difference being anti-social behaviour.



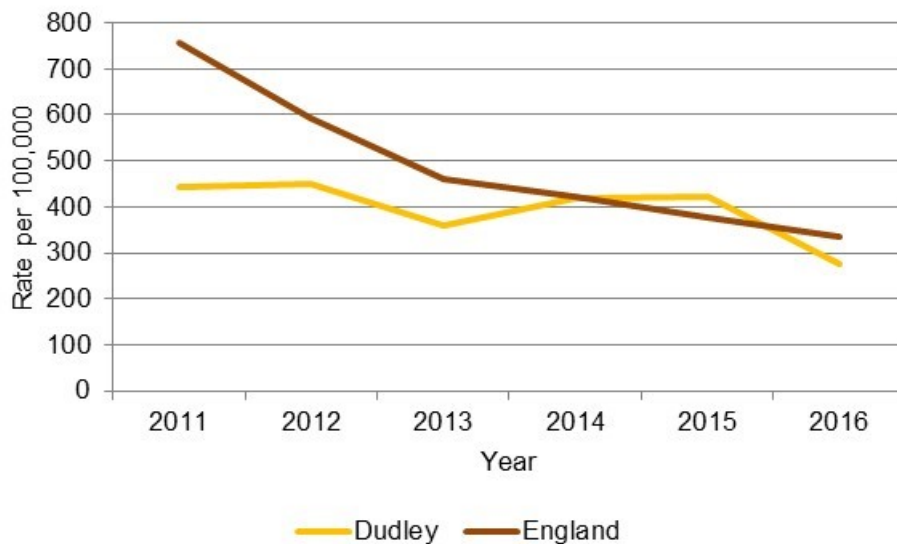
## 4.29 Youth offending

**Table 29: Juvenile First Time Entrants to the Criminal Justice System, Rate per 100,000 10-17 year olds**

	Dudley		England
	Count	Rate	Rate
2011	140	441.5	756.7
2012	140	449.2	592.6
2013	111	359.4	459.2
2014	126	418.5	421.5
2015	125	422.6	378.5
2016	81	276.6	334.0

Source: Ministry of Justice, Criminal Justice System Statistics Quarterly September 2016

**Figure 26: Juvenile First Time Entrants to the Criminal Justice System, Rate per 100,000 10-17 year Olds**



Source: Ministry of Justice, Criminal Justice System Statistics Quarterly September 2016

### What is this data telling us?

The rate of juvenile first time entrants to the criminal justice system has decreased between 2011 and 2016 from 441.5 to 276.6 per 100,000 population. Dudley's rate has been below the national rate with the exception of 2014 and 2015. In the most recent time period of 2016, the difference between Dudley and England's rates are 57.5 per 100,000.